

Environmental Management Plan (EMP)
Installation of Prefab Washrooms in
Kaghan Valley

09 July 2021

Hassam Abad, Jammu da Nakka, Lohar Banda,
Near FWO Check Post, Malkandi

Project Management Unit (DoT)
Khyber Pakhtunkhwa Integrated Tourism
Development Project (KITE)



Table of Contents		
S. No	Description	Page No.
1.	Project Description	03
2.	Sub-Project Description	03
3.	Sub-project locations	03
4.	Legal & Regulatory Framework	04
5.	Implementation Arrangements	05
6.	Environmental Screening Assessment & Management	06
7.	Monitoring & Reporting	07
8.	Mitigation and Monitoring Budget	18
Annexures		
I.	Environmental and Social Screening Checklist Hassam Abad	20
II.	Environmental and Social Screening Checklist Jammu Da Naka	37
III.	Environmental and Social Screening Checklist Lohar Banda	54
IV.	Environmental and Social Screening Checklist FWO Check Post	71
V.	Environmental And Social Screening Checklist Malkandi	89
VI.	Chance Find Procedure	107
VII.	COVID-19 SOPs for Contractors during Construction	108
VIII.	Architectural plan & Drawings	117
Tables		
1.	Environmental Management and Monitoring Plan	07
2.	EMP Implementation Cost	18



REVISION RECORD

Revision	Description	Date submitted	WB Review
Draft 1	Environmental Management Plan, Prefab Washrooms in Kaghan	10-Jun-2021	16-Jun-2021
Draft 2	Environmental Management Plan, Prefab Washrooms in Kaghan	9-Jul-2021	17-Jul-2021



1. Project Description:

The Government of Khyber Pakhtunkhwa (GoKP) is undertaking several initiatives to develop the tourism sector and employ it as a key driver of economic growth and job creation in the province. To create an enabling environment for the private sector to participate and develop the tourism value chain, the GoKP has entered into a partnership with the World Bank (WB) through an International Development Association (IDA) credit for the Khyber Pakhtunkhwa Integrated Tourism Development (KITE) Project. KITE is a \$70 million IDA credit which aims to create tourism-enabling infrastructure, enhance tourism assets and strengthen destination management for sustainable tourism development in Khyber Pakhtunkhwa.

2. Sub-project Description:

Every year, number of domestic and foreign tourist visits Khyber Pakhtunkhwa to enjoy its scenic beauty. These include families, children, colleges/universities' groups and disabled persons. The demand for tourist facilities is increasing day by day and lack of clean public toilet facility is a major problem visitors have to face problems due to unavailability of such services. To address this issue the PMU KITE DoT is undertaking initiative of supply and installation of prefab washrooms in Kaghan Valley, District Mansehra. After installation, these prefab units will be handed over to Kaghan Development authority (KgDA) for further operations and management (O&M) through its own resources or through outsourcing. Pertinent to mention that Malkandi site is approx. 100 ft away from river bank. River is approx. 15 ft down from the site ground level. Toilet's waste will not affect river in any case.

3. Sub-project locations:

S. No.	GPS	Name of Site/ Location	Proposed No of Units	Distance from Previous location
1	34°34'16.66" N; 73°21'36.98" E	Hassam Abad	Feasible for set of 04 Units	--
2	34°36'31.55" N; 73°22'41.49" E	Jammu Da Naka	Feasible for set of 04 Units	11.5 KM
3	34°39'22.69" N; 73°30'15.12" E	Malkandi	Feasible for 04 Units	20 KM
4	34°43'30.94" N; 73°34'16.74" E	Lohar Banda	Feasible for 02 Units	12 KM
5	34°45'12.65" N; 73°31'35.64" E	FWO Check Post	Feasible for 04 Units	10.56 KM



4. Legal and Regulatory Framework:

- a. **KP Environmental Protection Act (Revised 2014):** Relevant provisions are as follows:

Section 11 (Prohibition of Certain Discharges or Emissions) states that “Subject to the provisions of this Act and the rules and regulations made thereunder, no person shall discharge or emit, or allow the discharge or emission of, any effluent or waste or air pollutant or noise in an amount, concentration or level which is in excess of the Environmental Quality Standards”.

Section 13-I (Initial Environmental Examination and Environmental Impact Assessment) requires that “No proponent of a project shall commence construction or operation unless he has filed with the Federal Agency an IEE or, where the project is likely to cause an adverse environmental effect, an EIA, and has obtained from the Federal Agency approval in respect thereof.”

Section 13-2b (Review of IEE and EIA): The Environmental Protection Agency shall review the EIA report and accord its approval subject to such conditions as it may deem fit to impose, or require that the EIA be re-submitted after such modifications as may be stipulated or rejected, the project as being contrary to environmental objectives.

Section 15 (Handling of Hazardous Substances) requires that “Subject to the provisions of this Act, no person shall generate, collect, consign, transport, treat, dispose of, store, handle, or import any hazardous substance except (a) under a license issued by the EPA and in such manner as may be prescribed; or (b) in accordance with the provisions of any other law for the time being in force, or of any international treaty, convention, protocol, code, standard, agreement, or other Instrument to which Pakistan is a party.” Enforcement of this clause requires the EPA to issue regulations regarding licensing procedures and to define ‘hazardous substance.’ ESMF of KP Hydropower and Renewable Energy Development Program 19.

Section 16 (Regulation of Motor Vehicles): Subject to provision of this clause of the Act and the rules and regulations made thereunder, no person shall operate a motor vehicle from which air pollutants or noise are being emitted in an amount, concentration



or level which is in excess of the EQS, or where the applicable standards established under clause (g) of subsection (1) of Section-6 of the Act.

Section 18 (Penalties): Whoever contravenes or fails to comply with the provisions of section 11, 12, 13, or section 16 or any order issued thereunder shall be punishable with fine which may extend to one million rupees, and in the case of a continuing contravention or failure, with an additional fine which may extend to one hundred thousand rupees for every day during which such contravention or failure continues: Provided that if contravention of the provisions of section 11 also constitutes contravention of the provisions of section 15, such contravention shall be punishable under sub-section (2) only.

Section 19 (Offences by Bodies Corporate): Where any contravention of this Act has been committed by a body corporate, and it is proved that such offense has been committed with the consent or connivance or, is attributed to any negligence on the part of, any director, partner, manager, secretary or other officers of the body corporate, such director, partner, manager, secretary or other officers of the body corporate, shall be deemed guilty of such contravention along with the body corporate and shall be punished accordingly.

- b. Pakistan Environmental Protection Agency Review of IEE & EIA Regulations, 2000
- c. E&S Operational Policies of World Bank (OP 4.01)

5. Implementation Arrangements:

Project Director (PD) PMU KITE DoT will be overall responsible for the EMP implementation. The Liaison & Coordination Officer PMU DoT is designated as the KITE EMP Coordinator, who will ensure that the present EMP is effectively implemented. The EMP Coordinator will ensure that the Environmental Screening Checklists is provided to each of the Construction Contractors and the Supervision Consultants.

The Environmental Screening Checklist (**Annexure-I-V**) has been filled for each construction site at the outset by the PMU Environment and Social Specialist. The EMP will be kept at the respective site; copies of the EMP will be provided to the Supervisory consultant and contractor.



The Supervisory Consultant will also ensure that the environmental monitoring is carried out regularly during the entire construction phase. The filled Environmental Monitoring Checklist after each monitoring visit will be sent to the PMU E&S Expert, who will review and maintain complete record of these Checklists. A quarterly report on the basis of the filled checklists will be prepared and shared with the Project Director and World Bank.

Post-construction, the Kaghan Development Authority (KgDA) will be responsible for the regular O&M for the washrooms. KITE project will facilitate local Administration/development authority in hiring the O&M firm. E&S Expert PMU KITE will do monitoring visits in this regard.

6. Environmental Screening Assessment & Management:

The team comprising of Architect and LCO KITE conducted screening assessment. On the basis of that E&S Expert KITE prepared environmental and social management and monitoring plan. According to the assessment the proposed sub project activity comes under Category C.



7. Monitoring & Reporting

Environmental Management Plan (Standard EMP) for Supply & Installation of Prefabricated Washrooms in Kaghan

Table – 01: Anticipated Impacts and Mitigation Measures – Pre-construction Environmental Mitigation Plan

Field	Anticipated Impacts	Mitigation Measures	Responsible for Mitigation	Monitoring of Mitigation
Acquisition of land for pre- fabricated washrooms	Social impacts of the local community	The pre- fabricated washrooms are proposed to construct on the land owned by KgDA	KgDA/ DoT	PMU KITE DoT
Social and Cultural Resources	Ground disturbance can uncover and damage archaeological and historical remains	<ol style="list-style-type: none"> 1. Archaeological assessment of the archaeological potential of the site. Consider alternatives if the site is found to be of medium or high risk 2. A Chance Find Mechanism has been developed (Annex-VI) for use by the construction contractors in conducting any excavation work, to ensure that any chance finds are recognized and measures are taken to ensure they are protected and conserved. 	<ol style="list-style-type: none"> 1. DoT 2. DOAM 	PMU KITE DoT



Table- 02: Anticipated Impacts and Mitigation Measures – Construction Stage Environmental & Social Mitigation Plan

Field	Anticipated Impact	Mitigation Measures	Responsible for Mitigation	Monitoring of Mitigation
Air Quality	Dust emissions may be generated during construction activity.	<ol style="list-style-type: none"> 1. Stockpiled materials will be covered to avoid dust/particulate emission. 2. Contractor shall spray water on the dusty areas 2 time in a day 3. Contractor shall cover loose material when transported by vehicles. 4. All vehicles used during construction activities should be kept in good working condition and be properly tuned and maintained to minimize exhaust emissions. 	Construction Contractor, Site Supervisor	Supervisory Consultant KITE PMU DoT
Surface water	1. Construction activities can	1. Stock can be covered by	Construction	Supervisory Consultant



Field	Anticipated Impact	Mitigation Measures	Responsible for Mitigation	Monitoring of Mitigation
quality & Soil contamination	<p>have raw materials or construction materials.</p> <p>2. Lubricants/ paint during construction works can contaminate nearby surface water quality.</p> <p>3. Creation of stagnant water bodies in borrow pits, quarries, etc., encouraging for mosquito breeding and other disease vectors.</p> <p>4. Use of chemicals or solvents</p>	<p>plastic sheet.</p> <p>2. Septic Tank and Soakage pit shall be constructed in such a way that does not leak to the downstream communities.</p> <p>3. Dispose any wastes generated by construction activities in designated sites</p> <p>4. Contractor to use asbestos free cement.</p> <p>5. Debagging will be done in closed compound.</p> <p>6. Advised to use lead free paint.</p>	Contractor, Site Supervisor	KITE PMU DoT
Water Supply	If not provided, can create nuisance and smell.	Govt./ KgDA water supply resources will be used.	Contractor	Supervisory Consultant/ KITE PMU DoT/ KgDA



Field	Anticipated Impact	Mitigation Measures	Responsible for Mitigation	Monitoring of Mitigation
Washroom and Sewerage system improvements	Can create environmental and social problems if not addressed properly.	<ol style="list-style-type: none"> 1.Sewerage system shall improve utilizing best engineering practices according to the site location and downstream communities. 2.Soakage pit shall be away from the drinking water source. 3.All solid waste (including pampers, nappies etc) generated from toilets will be disposed by KgDA/ TMA staff in designated sites. Similarly, all waste water will be disposed in soak pit. 	Contractor	Supervisory Consultant/ KITE PMU DoT
Noise Levels	Noise generated due to drilling activities can create problems	Ear plugs shall be provided to the workers.	Construction Contractor	Supervisory Consultant KITE PMU DoT



Field	Anticipated Impact	Mitigation Measures	Responsible for Mitigation	Monitoring of Mitigation
	for workers.			
Solid Waste Disposal	Construction activities can generate solid waste on site.	<ol style="list-style-type: none"> 1. Disposal to municipal solid waste bin. 2. Proper disposal of solid waste in designated site to sustain the water and land quality for domestic requirements. 3. Use of PPEs (protective gloves, face masks, protective boots) by the workers involved in handling and management of all kinds of waste. 4. Avoid stockpiling of excess excavated soils 	Construction Contractor	Supervisory Consultant KITE PMU DoT
Accessibility	Traffic problems near project locations	<ol style="list-style-type: none"> 1. Coordinate with Traffic Police and local authorities 	Construction Contractor	Supervisory Consultant KITE PMU DoT



Field	Anticipated Impact	Mitigation Measures	Responsible for Mitigation	Monitoring of Mitigation
		<p>for short term management.</p> <ol style="list-style-type: none"> 2. Notify affected person from vehicles by providing sign boards informing nature and duration of construction works and contact numbers for concerns/ complaints. 3. Maintain GRM register on site. 		
Socio- Economic - Employment	Generation of contractual employment and increase in local revenue	<ol style="list-style-type: none"> 1. Employ local persons within the 2-km immediate area if manpower is available 2. Secure construction material from local market (if available) 	Construction Contractor	Supervisory Consultant KITE PMU DoT
Occupational	Excavation, digging, paint	1. Ensuring all workers are	Construction	Supervisory Consultant



Field	Anticipated Impact	Mitigation Measures	Responsible for Mitigation	Monitoring of Mitigation
Health and Safety	work, electricity work and operation of machinery on site can pose OH&S risks to the operator.	<p>provided with and use Personal Protective Equipment like helmet, safety shoves, gloves, nose mask and ear plugs</p> <p>2. Orientation on social and environmental components for all site personnel.</p> <p>3. Skilled staff shall be hired</p>	Contractor	KITE PMU DoT
Excavation of Earth	Excavation of earth for foundation	Contractor should obtain approval for excavation and will do compaction of site in order to protect erosion during rains.	Construction Contractor	Supervisory Consultant KITE PMU DoT
Sub project located in an area of seismic plants	Sub project located in an area of seismic plants	1. Incorporating Earthquake resistant features like frame structure, prefab material	Construction Contractor	Supervisory Consultant KITE PMU DoT



Field	Anticipated Impact	Mitigation Measures	Responsible for Mitigation	Monitoring of Mitigation
		<ol style="list-style-type: none"> 2. Earth quake engineering designing and training for contractor before starting work activities. 3. Getting communities involved in the process of disaster mitigation through education and awareness 		
Grievance Redressal	Public grievances related to environment and social aspects	<ol style="list-style-type: none"> 1. Maintain a complaint register on site. 2. Identify and appropriately respond to impacts on directly affected persons to ensure legal compliance and meet moral / ethical obligations. 3. Distribute GRM awareness leaflets to the local 	Construction Contractor	Supervisory Consultant KITE PMU DoT



GOVERNMENT
OF KHYBER
PAKHTUNKHWA

KHYBER PAKHTUNKHWA
**INTEGRATED TOURISM
DEVELOPMENT PROJECT (KITE)**
PROJECT MANAGEMENT UNIT (DoT)

Department of Tourism, Culture, Sports, Archaeology, Museums & Youth Affairs

Field	Anticipated Impact	Mitigation Measures	Responsible for Mitigation	Monitoring of Mitigation
		residents.		



Table-03: Anticipated Impacts and Mitigation Measures – Operation and Maintenance Environmental & Social Mitigation Plan- Pre Feb washrooms

Field	Anticipated Impact	Mitigation Measures	Responsible for Mitigation	Monitoring of Mitigation
Routine operation & maintenance of sewerage and washrooms	Improper maintenance can lead to unhygienic condition, public nuisance.	Develop and implement operation and maintenance (O&M) plans for prefab washrooms	KgDA	KgDA
Repair works	General impacts due to repair works	1. Shall immediately repair 2. Shall follow all health and safety procedures for work.	KgDA	KgDA
Traffic Management	If more vehicles park on site, the road expected to block for other visitors	1. The visitor can be stopped in line. 2. The traffic Police and local authorities will be given responsibility to manage the traffic near the pre-fabricated washrooms.	KgDA	KgDA



8. Mitigation and Monitoring Budget:

The cost for the implementation of construction stage activities given in this plan will be included within the civil works contract for this sub-project with total cost of Rs. **264,325/-**

Name of item	Quantity	Unit	Unit Rate	Total Amount (PKR)
Face Masks	11	box	250	2750
Safety Shoes	20	pairs	2000	40000
Gloves	50	pairs	1500	75000
First Aid Box(5	Box per site	5000	25000
Ear Plugs	55	Pair	25	1375
Safety Helmets	55	Per person	1200	66000
Safety Jackets	20	Per person	800	16000
Sanitizer	11	Per site	500	5500
Sub Total (1)				231,625
Others				
Reflective Tape	11	Each	200	2200
Safety cones	20	Each	700	14000
Safety boards	11	Each	1500	16500
Sub Total (2)				32,700
Grand Total (1+2)				264,325



O&M Budgeting:

Since the O&M will be outsourced through competitive process to a third party (sub-contract) therefore the cost will be calculated on the basis of bids received. In order to ensure that relevant aspects of O&M are being adhered to, the proposal will be reviewed technical/ procurement committee of KgDA.

KITE project will facilitate local Administration/ development authority in hiring the O&M firm.



Annexure I:

**Environmental and Social Screening (E&S Screening)
KITE DoT- Project**

Name of Sub- project	Installation of Pre-Fabricated Toilets Hasam Abad, Kaghan Valley, District Mansehra
Nature of Subproject	Tourism facilitation
Subproject Location	Hasam Abad Kaghan Valley, District Mansehra
Coordinates	34°34'16.66" N; 73°21'36.98" E
Proposed Activities	PMU KITE DoT intends to install 4 units prefab washrooms Hasam Abad Kaghan Valley District Mansehra. These units will include two units for male and a single unit for female and Persons With Disabilities (PWD). These units will be installed as per drawings attached in this document. The installation activities will include minor civil works i.e., construction of soak pits, septic tank, levelling of site, installation of washrooms and necessary sanitary works.
Subproject Objective	Tourism Facilitation
Proposing Agency/ Department	KITE Project DoT
Estimated Cost	Rs. 2,000,000/-/-
Current Information for Environmental & Social Screening	KITE ESMF, site visit, consultation with locals, hotel reps & Kaghan Development Authority (KgDA).
Consultation with communities	A consultation meeting was conducted with local hotels rep, TMA and KGDA. These included: Mr. Zahid Hussain, DD KgDA



Mr. Tufail Khan, Tehsildar Kaghan

Mr. Shamsheer Khan, Local Hotel Association Rep

Mr. Zia Ullah, TMA Balakot

The consultation involved briefing about the proposed installation of prefab toilets for tourist facilitation. The local hotel rep and other local welcomed the initiative and suggested the following to be considered during implementation:

Keeping in view the tourist influx separate units for male and female is required.

These toilets shall also be accessible for tourists visiting the area.

Proper cleanliness shall also be ensured during and post implementation.

Proper monitor should be carried out to ensure cleanliness of the toilets.

The people demanded for hiring of unskilled labors from local populace.



Environmental and Social Screening

S/No	ISSUES	None	Minor/ Small	Moderate/ Medium	Significant / Large	Remarks
A	Zoning and Land Use Planning					
1.	Will the subproject affect land use zoning and planning or conflict with prevalent land use patterns?	X	–	–	–	Since this site is along road therefore it will not affect any land use pattern.
2.	Will the subproject involve significant land disturbance or site clearance?	X	–	–	–	No site clearance is involved.
3.	Will the subproject land be subject to potential encroachment by urban or industrial use or located in an area intended for urban or industrial development?	X	–	–	–	
B	Utilities and Facilities					
1.	Will the subproject require the setting up of ancillary facilities?	X	–	–	–	Since it is small activity therefore it will not create a significant impact on utilities and services.
2.	Will the subproject make significant demands on utilities and services?	X	–	–	–	Facilities including sewerage line and water are available at site therefore no additional demand is required.
3.	Will the subproject require significant levels of accommodation or service	X	–	–	–	



S/No	ISSUES	None	Minor/ Small	Moderate/ Medium	Significant / Large	Remarks
	amenities to support the workforce during construction					
C	Water and Soil Contamination					
1.	Will the subproject require large amounts of raw materials or construction materials?	–	X Small amount of construction materials, sands, Iron, fencing, gravel, solar panel, batteries, fiber glass, crush, cement, steel will be used as per requirement.	–	–	As mitigation measure contractor will be advised to: <ul style="list-style-type: none"> • Use asbestos free cement. • Do debagging in a closed compound.
2.	Will the subproject generate large amounts of residual wastes, construction material waste or cause soil erosion?	X	–	–	–	
3.	Will the subproject result in potential soil or water contamination (e.g., from oil, grease and fuel from equipment yards)?	X	–	–	–	The sub project includes construction of septic tank and soak pits for wastewater hence all waste will go in these tanks for final disposal.



S/No	ISSUES	None	Minor/ Small	Moderate/ Medium	Significant / Large	Remarks
4.	Will the subproject lead to an increase in suspended sediments in streams affected by road cut erosion, decline in water quality and increased sedimentation downstream?	X	–	–	–	
5.	Will the subproject involve the use of chemicals or solvents?	–	X Paint, drilling, polish etc will be used during installation.	–	–	As a mitigation measure contractor will be advised to: • use lead free paint, • make sure that proper PPE be provided to each worker on site, • store the chemicals in enclosed stockroom (if required).
6.	Will the subproject lead to the destruction of vegetation and soil in the right-of-way, borrow pits, waste dumps, and equipment yards?	X	–	–	–	
7.	Will the subproject lead to the creation of stagnant water bodies in borrow pits, quarries, etc., encouraging for mosquito breeding and other disease vectors?	–	X	–	–	Yes, up to a small amount. Regular cleaning of site by contractor, refilling of borrow pits after



S/No	ISSUES	None	Minor/ Small	Moderate/ Medium	Significant / Large	Remarks
						completion of work will be ensured.
D	Noise and Air Pollution Hazardous Substances					
1.	Will the subproject increase the levels of harmful air emissions?	X	–	–	–	
2.	Will the subproject increase ambient noise levels?	X		–	–	
3.	Will the subproject involve the storage, handling or transport of hazardous substances?	X	–	–	–	
E	Fauna and Flora					
1.	Will the subproject involve the disturbance or modification of existing drainage channels (rivers, canals) or surface water bodies (wetlands, marshes)?	X	–	–	–	
2.	Will the subproject lead to the destruction or damage of terrestrial or aquatic ecosystems or endangered species directly or by induced development?	X	–	–	–	
3.	Will the subproject lead to the disruption/destruction of wildlife through interruption of migratory routes,	X	–	–	–	



S/No	ISSUES	None	Minor/ Small	Moderate/ Medium	Significant / Large	Remarks
4.	Disturbance of wildlife habitats, and noise-related problems?	X	–	–	–	
F	Destruction/Disruption of Land and Vegetation					
1.	Will the subproject lead to unplanned use of the infrastructure being developed?	X	–	–	–	
2.	Will the subproject lead to long-term or semi- permanent destruction of soils in cleared areas not suited for agriculture?	X	–	–	–	
3.	Will the subproject lead to the interruption of subsoil and overland drainage patterns (in areas of cuts and fills)?	X	–	–	–	
4.	Will the subproject lead to landslides, slumps, slips and other mass movements in road cuts?	X	–	–	–	
5.	Will the subproject lead to erosion of lands receiving concentrated outflow carried by covered or open drains?	X	–	–	–	
6.	Will the subproject lead to health hazards and interference of plant growth adjacent to roads by dust raised and blown by vehicles?	X	–	–	–	



S/No	ISSUES	None	Minor/ Small	Moderate/ Medium	Significant / Large	Remarks
G	Cultural Property					
1.	Will the subproject have an impact on archaeological or historical sites, including historic urban areas?	X	–	–	–	
2.	Will the subproject have an impact on religious monuments, structures and/or cemeteries?	X	–	–	–	
H	Expropriation and Social Disturbance					
1.	Will the subproject involve land expropriation or demolition of existing structures?	X	–	–	–	
2.	Will the subproject lead to induced settlements by workers and others causing social and economic disruption?	X	–	–	–	
3.	Will the subproject lead to environmental and social disturbance by construction camps?	X	–	–	–	
4.	Will the sub- project require of tree cutting, if yes how many, location, pictures	X	–	–	–	



Environmental and Social Screening (Site Related Issues)

S. No	Issues	Yes	No	Don't Know	Remarks/ Mitigation Measures
1.	Does the subproject require land acquisition? [Note: Fill in the land acquisition form if YES]	–	X	–	This site is a govt. property owned by KgDA.
2.	Does the subproject negatively impact livelihoods [Note: Describe separately if YES]	–	X	–	
3.	Is the sub project located on land with contested ownership?	–	X	–	
4.	Is the sub project located in an area with security problems	–	X	–	
5.	Is the sub projected located on land reclaimed from floods (the ownership here may be contested)	–	X	–	
6.	Is the subproject located in an area with designated natural reserves?	–	X	–	
7.	Is the subproject located in an area with unique natural features?	–	X	–	
8.	Is the subproject located in an area with endangered or	–	X	–	



S. No	Issues	Yes	No	Don't Know	Remarks/ Mitigation Measures
	conservation-worthy ecosystems, fauna or flora?				
9.	Is the subproject located in an area which would create a barrier for the movement of conservation-worthy wildlife or livestock?	–	X	–	
10.	Is the subproject located close to groundwater sources, surface water bodies, water courses or wetlands?	–	X	–	
11.	Is the subproject located in an area with designated cultural properties such as archaeological, historical and/or religious sites?	–	X	–	
12.	Is the subproject in an area with religious monuments, structures and/or cemeteries?	–	X	–	
13.	Is the project located in an area from where people have been displaced?	–	X	–	



S. No	Issues	Yes	No	Don't Know	Remarks/ Mitigation Measures
14.	Is the project located in an area where IDPs are temporarily settled?	–	X	–	
15.	Is the project in a politically sensitive area?	–	X	–	
16.	Is the subproject in a polluted or contaminated area?	–	X	–	
17.	Is the subproject located in an area of high visual and landscape quality?	X	–	–	The site is surrounded by high visual landscape but installation of these washrooms will not affect the same.
18.	Is the subproject located in an area susceptible to landslides or erosion?	-	X	–	
19.	Is the subproject located in an area of seismic faults?	X	-	–	The site is located in Zone -3.
20.	Is the subproject located in a densely populated area?	-	X	–	
21.	Is the subproject located on prime agricultural land?	–	X	–	
22.	Is the subproject located in an area of tourist importance?	X	–	–	The proposed location is situated on main Balakot Kaghan road. Few hotels are also built on the other side of road and is best suited for such tourist facilitation.



S. No	Issues	Yes	No	Don't Know	Remarks/ Mitigation Measures
23.	Is the subproject located near a waste dump?	–	X	–	
24.	Does the subproject have access to potable water?	X	–	–	Government water supply line is available on location
25.	Is the subproject located in an area with a wastewater network?	–	X	–	No however it is explained that waste water from toilets will be treated in septic tank. KgDA will outsource cleaning and operations of these toilets.
26.	Is the subproject located in the urban plan of the city?	–	X	–	



Environmental and Social Screening (Involuntary Resettlement Screening)

Potential Impacts	Yes	No	Expected	Remarks
Does the sub-project involve any physical construction work, i.e. rehabilitation, reconstruction or new construction? Specify in "remarks" column.	X	-	-	Small scale activities e.g. septic tank, soakage pit, leveling and dressing is involved.
Does the sub-project involve impacts on land, assets and people, if "Yes" try to quantify the impacts and check following items. If "No" impacts, explain the situation in "remarks" and move to section 2.	-	X	-	
Potential impacts				
Land (quantify and describe types of land in "remarks column".				This activity will be carried out on government land owned by KgDA.
Government or state owned land free of occupation (agriculture or settlement)	X	-	-	This activity will be carried out on government land.
Private land				
➤ Residential	-	X	-	
➤ Commercial	-	X	-	
➤ Agriculture	-	X	-	
➤ Communal	-	X	-	
➤ Others (specify in "remarks").	-	X	-	
Land-based assets:	-	X	-	
➤ Residential structures	-	X	-	
➤ Commercial structures (specify in "remarks")	-	X	-	
➤ Community structures (specify in "remarks")	-	X	-	
➤ Agriculture structures (specify in "remarks")	-	X	-	



Potential Impacts	Yes	No	Expected	Remarks
➤ Public utilities (specify in “remarks”)	-	X	-	
➤ Others (specify in “remarks”)	-	X	-	
Agriculture related impacts	-	X	-	
➤ Crops and vegetables (specify types and cropping area in “remarks”).	-	X	-	
➤ Trees (specify number and types in “remarks”).	-	X	-	
➤ Others (specify in “remarks”).	-	X	-	
Affected Persons (DPs)	-	X	-	
➤ Number of DPs	-	X	-	
➤ Males	-	X	-	
➤ Females	-	X	-	
➤ Titled land owners	-	X	-	
➤ Tenants and sharecroppers	-	X	-	
➤ Leaseholders	-	X	-	
➤ Agriculture wage laborers	-	X	-	
➤ Encroachers and squatters (specify in remarks column).	-	X	-	
➤ Vulnerable DPs (e.g. women headed households, minors and aged, orphans, disabled persons and those below the poverty line). Specify the number and vulnerability in “remarks”.	-	X	-	
➤ Others (specify in “remarks”)	-	X	-	
Section 2	-	X	-	
Others (specify in “remarks”).	-	X	-	



Potential Impacts	Yes	No	Expected	Remarks
➤ Are there any indigenous or other minority groups affected by land acquisition or project activities? If “Yes” check the following items	-	X	-	
➤ Indigenous groups (specify groups in “remarks”). Describe nature of impacts	-	X	-	
➤ Minority groups (specify in “remarks”). Describe nature of impacts	-	X	-	



Summarized E&S Screening Table

Type of Grant (s) Activities	Physical					Biological		Social and Socioeconomic											
	Soil Erosion/ Contamination	Air Quality	Surface Water Quality	Groundwater	Water Availability and Consumption	Natural Resources	Wildlife	Blocked Access	Noise and Vibration	Impacts on Cultural Heritage	Impacts on Livestock Grazing	Compensation	Safety Hazard	Infrastructure	Public Health	Aesthetic Value	Cultural Issues	Gender Issues	
Construction activities	C	C	B	C	C	C	C	C	C	B	B	C	C	C	B	B	C	C	C

KEY: A for high risk, B for medium risk, and C for negligible risk.



Overall Assessment	
<ul style="list-style-type: none"> Sub-project is declined 	—
<ul style="list-style-type: none"> Sub-project is accepted 	Yes
<ul style="list-style-type: none"> Sub-project is classified as environmental Category A and requires an in- depth Environmental and Social Impact Assessment and an Environmental Management Plan. 	—
<ul style="list-style-type: none"> Sub-project is classified as environmental Category B and requires an Environmental Management Plan. 	—
<ul style="list-style-type: none"> Sub-project is classified as environmental Category C and requires an Environmental Management Plan (EMP). 	<p>The sub-project impacts are localized and reversible in nature and can be managed through mitigation and management plan (checklist followed by supervision and monitoring checklist). This will be implemented by project engineer, contractor, and PMU Environmental and Social Safeguard team.</p>



Annexure- II

**Environmental and Social Screening (E&S Screening)
KITE DoT- Project**

Name of Sub- project	Installation of Pre-Fabricated Toilets Jammu Da Naka, Kaghan Valley District Mansehra
Nature of Subproject	Tourism Facilitation
Subproject Location	Jammu Da Naka Kaghan Valley District Mansehra
Coordinates	34°36'31.55" N; 73°22'41.49" E
Proposed Activities	PMU KITE DoT intends to install 4 units prefab washrooms Jammu Da Naka Kaghan Valley, District Mansehra. These units will include two units for male and as single unit for female and Persons with Disabilities. These units will be installed by demolishing a set of old unit (installed by locals) as per drawings attached in this document. The installation activities will include minor civil works i.e., construction of soak pits, septic tank, levelling of site, installation of washrooms and necessary sanitary works.
Subproject Objective	Tourism Facilitation
Proposing Agency/ Department	KITE Project DoT
Estimated Cost	Rs. 2,000,000/-
Current Information for Environmental & Social Screening	KITE ESMF, site visit, consultation with local hotel reps, locals of area, Tehsil Municipal Adminsitration (TMA) & Kaghan Development Authority (KgDA).
Consultation with communities	A consultation meeting was conducted with local hotels rep, TMA and KGDA. The participants were: i. Mr. Zahid Hussain, DD KgDA



- ii. Mr. Tufail Khan, Tehsildar Kaghan
- iii. Mr. Shamsheer Khan, Local Hotel Association Rep
- iv. Mr. Zia Ullah, TMA Balakot

The consultation involved briefing about the proposed installation of prefab toilets for tourist facilitation. The local hotel rep and other local welcomed the initiative and suggested the following to be considered during implementation:

- i. Keeping in view the tourist influx separate units for male and female is required.
- ii. These toilets shall also be accessible for tourists visiting the site.
- iii. Proper cleanliness shall also be ensured during and post implementation.
- iv. Proper monitor should be carried out to ensure cleanliness of the toilets.
- v. The people demanded for hiring of unskilled labors from local populace.

The screening team i.e Architect KITE and LCO KITE ensured the above compliances.



Environmental and Social Screening

S/No	ISSUES	None	Minor/ Small	Moderate/ Medium	Significant / Large	Remarks
A	Zoning and Land Use Planning					
1.	Will the subproject affect land use zoning and planning or conflict with prevalent land use patterns?	X	–	–	–	This site is along roads therefore no land use pattern will be affected.
2.	Will the subproject involve significant land disturbance or site clearance?	–	X Dismantling of old washrooms	–	–	Disposal of dismantled structure by the contractor.
3.	Will the subproject land be subject to potential encroachment by urban or industrial use or located in an area intended for urban or industrial development?	X	–	–	–	
B	Utilities and Facilities					
1.	Will the subproject require the setting up of ancillary facilities?	X	–	–	–	Since it is small activity therefore it will not create a significant impact on utilities and services.
2.	Will the subproject make significant demands on utilities and services?	X	–	–	–	Facilities like sewerage line and water is available at site therefore no additional demand is required.



S/No	ISSUES	None	Minor/ Small	Moderate/ Medium	Significant / Large	Remarks
3.	Will the subproject require significant levels of accommodation or service amenities to support the workforce during construction	X	–	–	–	
C	Water and Soil Contamination					
1.	Will the subproject require large amounts of raw materials or construction materials?	–	X Small amount of construction materials, sands, Iron, fencing, gravel, solar panel, batteries, fiber glass, crush, cement, steel will be used as per requirement.	–	–	As mitigation measure contractor will be advised to: <ul style="list-style-type: none"> • use asbestos free cement. • Do debagging in a closed compound.
2.	Will the subproject generate large amounts of residual wastes, construction material waste or cause soil erosion?	X	–	–	–	
3.	Will the subproject result in potential soil or water contamination (e.g., from oil, grease and fuel from equipment yards)?	X	–	–	–	The sub project includes construction of septic tank and soak pit for waste water hence all waster will go in these tanks for final disposal.



S/No	ISSUES	None	Minor/ Small	Moderate/ Medium	Significant / Large	Remarks
4.	Will the subproject lead to an increase in suspended sediments in streams affected by road cut erosion, decline in water quality and increased sedimentation downstream?	X	–	–	–	
5.	Will the subproject involve the use of chemicals or solvents?	–	X Paint, drilling, polish etc will be used during installation.	–	–	As a mitigation measure contractor will be advised to: • use lead free paint, • make sure that proper PPE be provided to each worker on site, store the chemicals in enclosed stockroom (if required).
6.	Will the subproject lead to the destruction of vegetation and soil in the right-of-way, borrow pits, waste dumps, and equipment yards?	X	–	–	–	
7.	Will the subproject lead to the creation of stagnant water bodies in borrow pits, quarries, etc., encouraging for mosquito breeding and other disease vectors?	–	X	–	–	Yes, up to a small amount. Regular cleaning of site by contractor, refilling of



S/No	ISSUES	None	Minor/ Small	Moderate/ Medium	Significant / Large	Remarks
						borrow pits after completion of work will be ensured.
D	Noise and Air Pollution Hazardous Substances					
1.	Will the subproject increase the levels of harmful air emissions?	X	–	–	–	
2.	Will the subproject increase ambient noise levels?	X	–	–	–	
3.	Will the subproject involve the storage, handling or transport of hazardous substances?	X	–	–	–	
E	Fauna and Flora					
1.	Will the subproject involve the disturbance or modification of existing drainage channels (rivers, canals) or surface water bodies (wetlands, marshes)?	X	–	–	–	
2.	Will the subproject lead to the destruction or damage of terrestrial or aquatic ecosystems or endangered species directly or by induced development?	X	–	–	–	



S/No	ISSUES	None	Minor/ Small	Moderate/ Medium	Significant / Large	Remarks
3.	Will the subproject lead to the disruption/destruction of wildlife through interruption of migratory routes,	X	–	–	–	
4.	Disturbance of wildlife habitats, and noise-related problems?	X	–	–	–	
F	Destruction/Disruption of Land and Vegetation					
1.	Will the subproject lead to unplanned use of the infrastructure being developed?	X	–	–	–	
2.	Will the subproject lead to long-term or semi- permanent destruction of soils in cleared areas not suited for agriculture?	X	–	–	–	
3.	Will the subproject lead to the interruption of subsoil and overland drainage patterns (in areas of cuts and fills)?	X	–	–	–	
4.	Will the subproject lead to landslides, slumps, slips and other mass movements in road cuts?	X	–	–	–	
5.	Will the subproject lead to erosion of lands receiving concentrated outflow carried by covered or open drains?	X	–	–	–	
6.	Will the subproject lead to health hazards and interference of plant growth adjacent	X	–	–	–	



S/No	ISSUES	None	Minor/ Small	Moderate/ Medium	Significant / Large	Remarks
	to roads by dust raised and blown by vehicles?					
G	Cultural Property					
1.	Will the subproject have an impact on archaeological or historical sites, including historic urban areas?	X	–	–	–	
2.	Will the subproject have an impact on religious monuments, structures and/or cemeteries?	X	–	–	–	
H	Expropriation and Social Disturbance					
1.	Will the subproject involve land expropriation or demolition of existing structures?	X	–	–	–	
2.	Will the subproject lead to induced settlements by workers and others causing social and economic disruption?	X	–	–	–	
3.	Will the subproject lead to environmental and social disturbance by construction camps?	X	–	–	–	
4.	Will the sub- project require of tree cutting, if yes how many, location, pictures	X	–	–	–	



Environmental and Social Screening (Site Related Issues)

S. No	Issues	Yes	No	Don't Know	Remarks/ Mitigation Measures
1.	Does the subproject require land acquisition? [Note: Fill in the land acquisition form if YES]	–	X	–	The site is owned by KgDA.
2.	Does the subproject negatively impact livelihoods [Note: Describe separately if YES]	–	X	–	
3.	Is the sub project located on land with contested ownership?	–	X	–	
4.	Is the sub project located in an area with security problems	–	X	–	
5.	Is the sub projected located on land reclaimed from floods (the ownership here may be contested)	–	X	–	
6.	Is the subproject located in an area with designated natural reserves?	–	X	–	
7.	Is the subproject located in an area with unique natural features?	–	X	–	
8.	Is the subproject located in an area with endangered or	–	X	–	



S. No	Issues	Yes	No	Don't Know	Remarks/ Mitigation Measures
	conservation-worthy ecosystems, fauna or flora?				
9.	Is the subproject located in an area which would create a barrier for the movement of conservation-worthy wildlife or livestock?	–	X	–	
10.	Is the subproject located close to groundwater sources, surface water bodies, water courses or wetlands?	–	X	–	
11.	Is the subproject located in an area with designated cultural properties such as archaeological, historical and/or religious sites?	–	X	–	
12.	Is the subproject in an area with religious monuments, structures and/or cemeteries?	–	X	–	
13.	Is the project located in an area from where people have been displaced?	–	X	–	



S. No	Issues	Yes	No	Don't Know	Remarks/ Mitigation Measures
14.	Is the project located in an area where IDPs are temporarily settled?	–	X	–	
15.	Is the project in a politically sensitive area?	–	X	–	
16.	Is the subproject in a polluted or contaminated area?	–	X	–	
17.	Is the subproject located in an area of high visual and landscape quality?	X	–	–	This site surroundings have visual landscape but installation of these washrooms will not affect the same.
18.	Is the subproject located in an area susceptible to landslides or erosion?	-	X	–	
19.	Is the subproject located in an area of seismic faults?	X	–	–	The site located in Zone 3.
20.	Is the subproject located in a densely populated area?	-	X	–	
21.	Is the subproject located on prime agricultural land?	–	X	–	
22.	Is the subproject located in an area of tourist importance?	X	–	–	The proposed site is on main Balakot-Kaghan road and is best suited for such facility.
23.	Is the subproject located near a waste dump?	–	X	–	



S. No	Issues	Yes	No	Don't Know	Remarks/ Mitigation Measures
24.	Does the subproject have access to potable water?	X	–	–	Government water supply line is available on location and will be used for toilet facility.
25.	Is the subproject located in an area with a wastewater network?	–	X	–	No however it is explained that waste water from toilets will be treated in septic tank. KGDA will outsource cleaning and operations of these toilets.
26.	Is the subproject located in the urban plan of the city?	–	X	–	



Environmental and Social Screening (Involuntary Resettlement Screening)

Potential Impacts	Yes	No	Expected	Remarks
Does the sub-project involve any physical construction work, i.e. rehabilitation, reconstruction or new construction? Specify in "remarks" column.	X	-	-	Small scale activities e.g. septic tank, soakage pit, leveling and dressing is involved.
Does the sub-project involve impacts on land, assets and people, if "Yes" try to quantify the impacts and check following items. If "No" impacts, explain the situation in "remarks" and move to section 2.	-	X	-	
Potential impacts				
Land (quantify and describe types of land in "remarks column".	X	-	-	This activity will be carried out on owned by KgDA Land.
Government or state owned land free of occupation (agriculture or settlement)	X	-	-	This activity will be carried out on owned by KgDA Land.
Private land				
➤ Residential	-	X	-	



Potential Impacts	Yes	No	Expected	Remarks
➤ Commercial	-	X	-	
➤ Agriculture	-	X	-	
➤ Communal	-	X	-	
➤ Others (specify in "remarks").	-	X	-	
Land-based assets:	-	X	-	
➤ Residential structures	-	X	-	
➤ Commercial structures (specify in "remarks")	-	X	-	
➤ Community structures (specify in "remarks")	-	X	-	
➤ Agriculture structures (specify in "remarks")	-	X	-	
➤ Public utilities (specify in "remarks")	-	X	-	
➤ Others (specify in "remarks")	-	X	-	
Agriculture related impacts	-	X	-	
➤ Crops and vegetables (specify types and cropping area in "remarks").	-	X	-	
➤ Trees (specify number and types in "remarks").	-	X	-	
➤ Others (specify in "remarks").	-	X	-	
Affected Persons (DPs)	-	X	-	
➤ Number of DPs	-	X	-	
➤ Males	-	X	-	
➤ Females	-	X	-	
➤ Titled land owners	-	X	-	
➤ Tenants and sharecroppers	-	X	-	
➤ Leaseholders	-	X	-	
➤ Agriculture wage laborers	-	X	-	
➤ Encroachers and squatters (specify in remarks)	-	X	-	
➤ Vulnerable DPs (e.g. women headed households, minors)	-	X	-	



Potential Impacts	Yes	No	Expected	Remarks
➤ Others (specify in "remarks")	-	X	-	
Section 2	-	X	-	
Others (specify in "remarks").	-	X	-	
➤ Are there any indigenous or other minority groups	-	X	-	
➤ Indigenous groups (specify groups in "remarks").	-	X	-	
➤ Minority groups (specify in "remarks"). Describe nature of	-	X	-	



Summarized E&S Screening Table

Type of Grant (s) Activities	Physical						Biological		Social and Socioeconomic										
	Soil Erosion/ Contamination	Air Quality	Surface Water Quality	Groundwater	Water Availability and Consumption	Natural Resources	Wildlife	Blocked Access	Noise and Impacts on	Impacts on	Livestock Grazing	Compensation	Safety Hazard	Infrastructure	Public Health	Aesthetic Value	Cultural Issues	Gender Issues	
Construction activities	C	C	B	C	C	C	C	C	C	B	B	C	C	C	B	B	C	C	C

KEY: A for high risk, B for medium risk, and C for negligible risk.



Overall Assessment	
<ul style="list-style-type: none"> Sub-project is declined 	—
<ul style="list-style-type: none"> Sub-project is accepted 	Yes
<ul style="list-style-type: none"> Sub-project is classified as environmental Category A and requires an in- depth Environmental and Social Impact Assessment and an Environmental Management Plan. 	—
<ul style="list-style-type: none"> Sub-project is classified as environmental Category B and requires an Environmental Management Plan. 	—
<ul style="list-style-type: none"> Sub-project is classified as environmental Category C and requires an Environmental Management Plan (EMP). 	<p>The sub-project impacts are localized and reversible in nature and can be managed through mitigation and management plan (checklist followed by supervision and monitoring checklist). This will be implemented by project engineer, contractor, and PMU Environmental and Social Safeguard team.</p>



Annexure- III

**Environmental and Social Screening (E&S Screening)
KITE DoT- Project**

Name of Sub- project	Installation of Pre-Fabricated Toilets Lohar Banda, Kaghan Valley, District Mansehra
Nature of Subproject	Tourism facilitation
Subproject Location	Lohar Banda, Kaghan Valley, District Mansehra
Coordinates	34°43'30.94" N; 73°34'16.74" E
Proposed Activities	PMU KITE DoT intends to install 2 units prefab washrooms Lohar Banda Kaghan Valley District Mansehra. These units will include a single unit for male and female each. These units will be installed as per drawings attached in this document. The installation activities will include minor civil works i.e. construction of soak pits, septic tank, levelling of site, installation of washrooms and necessary sanitary works.
Subproject Objective	Tourism Facilitation
Proposing Agency/ Department	KITE Project DoT
Estimated Cost	Rs.1,100,000/-
Current Information for Environmental & Social Screening	KITE ESMF, site visit, consultation with communities & Kaghan Development Authority (KgDA).
Consultation with communities	A consultation meeting was conducted with local hotels rep, TMA and KGDA. The participants were: i. Mr. Zahid Hussain, DD KgDA ii. Mr. Tufail Khan, Tehsildar Kaghan iii. Mr. Shamsheer Khan, Local Hotel Association Rep



iv. Mr. Zia Ullah, TMA Balakot

The consultation involved briefing about the proposed installation of prefab toilets for tourist facilitation. The local hotel rep and other local welcomed the initiative and suggested the following to be considered during implementation:

- i. Keeping in view the tourist influx separate units for male and female is required.
- ii. These toilets shall also be accessible for tourists visiting the site.
- iii. Proper cleanliness shall also be ensured during and post implementation.
- iv. Proper monitor should be carried out to ensure cleanliness of the toilets.
- v. The people demanded for hiring of unskilled labors from local populace.

The screening team i.e. Faiz Muhammad, LCO and Uzair Maqsood, Architect KITE ensured the above compliances.



Environmental and Social Screening

S/No	ISSUES	None	Minor/ Small	Moderate/ Medium	Significant / Large	Mitigation Measures/ Remarks
A	Zoning and Land Use Planning					
1.	Will the subproject affect land use zoning and planning or conflict with prevalent land use patterns?	X	–	–	–	The site is owned by KgDA therefore no land use pattern is affected.
2.	Will the subproject involve significant land disturbance or site clearance?	X	–	–	–	No site clearance is involved.
3.	Will the subproject land be subject to potential encroachment by urban or industrial use or located in an area intended for urban or industrial development?	X	–	–	–	
B	Utilities and Facilities					
1.	Will the subproject require the setting up of ancillary facilities?	X	–	–	–	Since it is small activity therefore it will not create a significant impact on utilities and services.
2.	Will the subproject make significant demands on utilities and services?	X	–	–	–	Facilities including sewerage line and water is available at site therefore no additional demand is required.



S/No	ISSUES	None	Minor/ Small	Moderate/ Medium	Significant / Large	Mitigation Measures/ Remarks
3.	Will the subproject require significant levels of accommodation or service amenities to support the workforce during construction	X	–	–	–	
C	Water and Soil Contamination					
1.	Will the subproject require large amounts of raw materials or construction materials?	–	X Small amount of construction materials, sands, Iron, fencing, gravel, solar panel, batteries, fiber glass, crush, cement, steel will be used as per requirement	–	–	As mitigation measure contractor will be advised to: <ul style="list-style-type: none"> • use asbestos free cement. • Do debugging in a closed compound.
2.	Will the subproject generate large amounts of residual wastes, construction material waste or cause soil erosion?	X	–	–	–	



S/No	ISSUES	None	Minor/ Small	Moderate/ Medium	Significant / Large	Mitigation Measures/ Remarks
3.	Will the subproject result in potential soil or water contamination (e.g., from oil, grease and fuel from equipment yards)?	X	–	–	–	The sub project includes construction of septic tank and soak pits for wastewater hence all waste will go in these tanks for final disposal
4.	Will the subproject lead to an increase in suspended sediments in streams affected by road cut erosion, decline in water quality and increased sedimentation downstream?	X	–	–	–	
5.	Will the subproject involve the use of chemicals or solvents?	–	X Paint, drilling, polish etc will be used during installation.	–	–	As a mitigation measure contractor will be advised to: <ul style="list-style-type: none"> • use lead free paint, • make sure that proper PPE be provided to each worker on site, store the chemicals in enclosed stockroom (if required).
6.	Will the subproject lead to the destruction of vegetation and soil in the right-of-way, borrow pits, waste dumps, and equipment yards?	X	–	–	–	



S/No	ISSUES	None	Minor/ Small	Moderate/ Medium	Significant / Large	Mitigation Measures/ Remarks
7.	Will the subproject lead to the creation of stagnant water bodies in borrow pits, quarries, etc., encouraging for mosquito breeding and other disease vectors?	–	X	–	–	Yes, up to a small amount. Regular cleaning of site by contractor, refilling of borrow pits after completion of work will be ensured.
D	Noise and Air Pollution Hazardous Substances					
1.	Will the subproject increase the levels of harmful air emissions?	X	–	–	–	
2.	Will the subproject increase ambient noise levels?	X	–	–	–	
3.	Will the subproject involve the storage, handling or transport of hazardous substances?	X	–	–	–	
E	Fauna and Flora					
1.	Will the subproject involve the disturbance or modification of existing drainage channels (rivers, canals) or surface water bodies (wetlands, marshes)?	X	–	–	–	
2.	Will the subproject lead to the destruction or damage of terrestrial or aquatic ecosystems or endangered species directly or by induced development?	X	–	–	–	



S/No	ISSUES	None	Minor/ Small	Moderate/ Medium	Significant / Large	Mitigation Measures/ Remarks
3.	Will the subproject lead to the disruption/destruction of wildlife through interruption of migratory routes,	X	–	–	–	
4.	Disturbance of wildlife habitats, and noise-related problems?	X	–	–	–	
F	Destruction/Disruption of Land and Vegetation					
1.	Will the subproject lead to unplanned use of the infrastructure being developed?	X	–	–	–	
2.	Will the subproject lead to long-term or semi- permanent destruction of soils in cleared areas not suited for agriculture?	X	–	–	–	
3.	Will the subproject lead to the interruption of subsoil and overland drainage patterns (in areas of cuts and fills)?	X	–	–	–	
4.	Will the subproject lead to landslides, slumps, slips and other mass movements in road cuts?	X	–	–	–	
5.	Will the subproject lead to erosion of lands receiving concentrated outflow carried by covered or open drains?	X	–	–	–	
6.	Will the subproject lead to health hazards and interference of plant growth adjacent	X	–	–	–	



S/No	ISSUES	None	Minor/ Small	Moderate/ Medium	Significant / Large	Mitigation Measures/ Remarks
	to roads by dust raised and blown by vehicles?					
G	Cultural Property					
1.	Will the subproject have an impact on archaeological or historical sites, including historic urban areas?	X	–	–	–	
2.	Will the subproject have an impact on religious monuments, structures and/or cemeteries?	X	–	–	–	
H	Expropriation and Social Disturbance					
1.	Will the subproject involve land expropriation or demolition of existing structures?	X	–	–	–	
2.	Will the subproject lead to induced settlements by workers and others causing social and economic disruption?	X	–	–	–	
3.	Will the subproject lead to environmental and social disturbance by construction camps?	X	–	–	–	
4.	Will the sub- project require of tree cutting, if yes how many, location, pictures	X	–	–	–	



Environmental and Social Screening (Site Related Issues)

S. No	Issues	Yes	No	Don't Know	Remarks/ Mitigation Measures
1.	Does the subproject require land acquisition? [Note: Fill in the land acquisition form if YES]	–	X	–	The site is owned by KgDA.
2.	Does the subproject negatively impact livelihoods [Note: Describe separately if YES]	–	X	–	
3.	Is the sub project located on land with contested ownership?	–	X	–	
4.	Is the sub project located in an area with security problems	–	X	–	
5.	Is the sub projected located on land reclaimed from floods (the ownership here may be contested)	–	X	–	
6.	Is the subproject located in an area with designated natural reserves?	–	X	–	
7.	Is the subproject located in an area with unique natural features?	–	X	–	
8.	Is the subproject located in an area with endangered or	–	X	–	



S. No	Issues	Yes	No	Don't Know	Remarks/ Mitigation Measures
	conservation-worthy ecosystems, fauna or flora?				
9.	Is the subproject located in an area which would create a barrier for the movement of conservation-worthy wildlife or livestock?	–	X	–	
10.	Is the subproject located close to groundwater sources, surface water bodies, water courses or wetlands?	–	X	–	
11.	Is the subproject located in an area with designated cultural properties such as archaeological, historical and/or religious sites?	–	X	–	
12.	Is the subproject in an area with religious monuments, structures and/or cemeteries?	–	X	–	
13.	Is the project located in an area from where people have been displaced?	–	X	–	



S. No	Issues	Yes	No	Don't Know	Remarks/ Mitigation Measures
14.	Is the project located in an area where IDPs are temporarily settled?	–	X	–	
15.	Is the project in a politically sensitive area?	–	X	–	
16.	Is the subproject in a polluted or contaminated area?	–	X	–	
17.	Is the subproject located in an area of high visual and landscape quality?	X	–	–	The surroundings are of high visual landscape however installation of these facility will not affect any landscape.
18.	Is the subproject located in an area susceptible to landslides or erosion?	-	X	–	
19.	Is the subproject located in an area of seismic faults?	X	–	–	The site is located in Zone-3
20.	Is the subproject located in a densely populated area?	-	X	–	
21.	Is the subproject located on prime agricultural land?	–	X	–	
22.	Is the subproject located in an area of tourist importance?	X	–	–	The site is located on main Kaghan road and many tourists travel this route. Installation of this facility is best suited.
23.	Is the subproject located near a waste dump?	–	X	–	



S. No	Issues	Yes	No	Don't Know	Remarks/ Mitigation Measures
24.	Does the subproject have access to potable water?	X	–	–	Government water supply line is available on location
25.	Is the subproject located in an area with a wastewater network?	–	X	–	No however it is explained that waste water from toilets will be treated in septic tank. KgDA will outsource cleaning and operations of these toilets.
26.	Is the subproject located in the urban plan of the city?	–	X	–	



Environmental and Social Screening (Involuntary Resettlement Screening)

Potential Impacts	Yes	No	Expected	Remarks
Does the sub-project involve any physical construction work, i.e. rehabilitation, reconstruction or new construction? Specify in “remarks” column.	X	–	–	Small scale activities e.g. septic tank, soakage pit, leveling and dressing is involved.
Does the sub-project involve impacts on land, assets and people, if “Yes” try to quantify the impacts and check following items. If “No” impacts, explain the situation in “remarks” and move to section 2.	–	X	–	
Potential impacts				
Land (quantify and describe types of land in “remarks column”.	X	–	–	This activity will be carried out on KgDA land.
Government or state owned land free of occupation (agriculture or settlement)	X	–	–	This activity will be carried out on government land.
Private land				
➤ Residential	-	X	-	



Potential Impacts	Yes	No	Expected	Remarks
➤ Commercial	-	X	-	
➤ Agriculture	-	X	-	
➤ Communal	-	X	-	
➤ Others (specify in "remarks").	-	X	-	
Land-based assets:	-	X	-	
➤ Residential structures	-	X	-	
➤ Commercial structures (specify in "remarks")	-	X	-	
➤ Community structures (specify in "remarks")	-	X	-	
➤ Agriculture structures (specify in "remarks")	-	X	-	
➤ Public utilities (specify in "remarks")	-	X	-	
➤ Others (specify in "remarks")	-	X	-	
Agriculture related impacts	-	X	-	
➤ Crops and vegetables (specify types and cropping area in "remarks").	-	X	-	
➤ Trees (specify number and types in "remarks").	-	X	-	
➤ Others (specify in "remarks").	-	X	-	
Affected Persons (DPs)	-	X	-	
➤ Number of DPs	-	X	-	
➤ Males	-	X	-	
➤ Females	-	X	-	
➤ Titled land owners	-	X	-	
➤ Tenants and sharecroppers	-	X	-	
➤ Leaseholders	-	X	-	
➤ Agriculture wage laborers	-	X	-	
➤ Encroachers and squatters (specify in remarks)	-	X	-	
➤ Vulnerable DPs (e.g. women headed households, minors)	-	X	-	



Potential Impacts	Yes	No	Expected	Remarks
➤ Others (specify in "remarks")	-	X	-	
Section 2	-	X	-	
Others (specify in "remarks").	-	X	-	
➤ Are there any indigenous or other minority groups	-	X	-	
➤ Indigenous groups (specify groups in "remarks").	-	X	-	
➤ Minority groups (specify in "remarks"). Describe nature of	-	X	-	



Summarized E&S Screening Table

Type Activities	Physical					Biological		Social and Socioeconomic											
	Soil Erosion/ Contamination	Air Quality	Surface Water Quality	Groundwater	Water Availability and Consumption	Natural Resources	Wildlife	Blocked Access	Noise and Vibration	Impacts on Cultural Heritage	Impacts on Livelihoods	Livestock Grazing	Compensation	Safety Hazard	Infrastructure	Public Health	Aesthetic Value	Cultural Issues	Gender Issues
Construction activities	C	C	B	C	B	C	C	C	C	B	B	C	C	C	B	B	C	C	C

KEY: A for high risk, B for medium risk, and C for negligible risk.



Overall Assessment	
<ul style="list-style-type: none"> • Sub-project is declined 	—
<ul style="list-style-type: none"> • Sub-project is accepted 	Yes
<ul style="list-style-type: none"> • Sub-project is classified as environmental Category A and requires an in- depth Environmental and Social Impact Assessment and an Environmental Management Plan. 	—
<ul style="list-style-type: none"> • Sub-project is classified as environmental Category B and requires an Environmental Management Plan. 	—
<ul style="list-style-type: none"> • Sub-project is classified as environmental Category C and requires an Environmental Management Plan (EMP). 	<p>The sub-project impacts are localized and reversible in nature and can be managed through mitigation and management plan (checklist followed by supervision and monitoring checklist). This will be implemented by project engineer, contractor, and PMU Environmental and Social Safeguard team.</p>



Annexure- IV

Environmental and Social Screening (E&S Screening)

KITE DoT- Project

Name of Sub- project	Installation of 4unit Pre-Fabricated Toilets Frontier Works Organization (FWO) Check Post, Kaghan, District Mansehra
Nature of Subproject	Tourism Development & facilitation
Subproject Location	FWO Check Post Kaghan District Mansehra
Coordinates	34°45'12.65" N; 73°31'35.64" E
Proposed Activities	PMU KITE DoT intends to install 4 units prefab washrooms near FWO Check Post Kaghan District Mansehra. These units will include two units for male and a single unit for female and persons with disabilities (PWD). These units will be installed as per drawings attached in this document. The installation activities will include minor civil works i.e. construction of soak pits, septic tank, levelling of site, installation of washrooms and necessary sanitary works.
Subproject Objective	Tourism facilitation
Proposing Agency/ Department	KITE Project DoT
Estimated Cost	Rs. 2,000,000/-
Current Information for Environmental & Social Screening	KITE ESMF, site visit, consultation with local hotels rep, Tehsil Municipal Administration (TMA) & Kaghan Development Authority (KgDA).
Consultation Session details	A consultation meeting was conducted with local hotels rep, TMA and KGDA. The participants were: i. Mr. Zahid Hussain, DD KgDA ii. Mr. Tufail Khan, Tehsildar Kaghan



- iii. Mr. Shamsheer Khan, Local Hotel Association Rep
- iv. Mr. Zia Ullah, TMA Balakot

The consultation involved briefing about the proposed installation of prefab toilets for tourist facilitation. The local hotel rep and other locals welcomed the initiative and suggested the following to be considered during implementation:

- Keeping in view the tourist influx separate units for male and female is required.
- These toilets shall also be accessible for people visiting the site.
- Proper cleanliness shall also be ensured during and post implementation.
- Proper monitoring should be carried out to ensure cleanliness of the toilets.
- The people demanded for hiring of unskilled labors from local populace.

The screening team i.e. Faiz Muhammad, LCO KITE and Uzair Maqsood, Architect KITE ensured the above compliances.



Environmental and Social Screening

S/No	ISSUES	None	Minor/ Small	Moderate/ Medium	Significant / Large	Remarks
A	Zoning and Land Use Planning					
1.	Will the subproject affect land use zoning and planning or conflict with prevalent land use patterns?	X	–	–	–	Since this site is along road therefore this activity will not affect any land use pattern. Pertinent to mention that this facility will not hamper any traffic on the road.
2.	Will the subproject involve significant land disturbance or site clearance?	X	–	–	–	No site clearance is involved.
3.	Will the subproject land be subject to potential encroachment by urban or industrial use or located in an area intended for urban or industrial development?	X	–	–	–	
B	Utilities and Facilities					
1.	Will the subproject require the setting up of ancillary facilities?	X	–	–	–	Since it is small activity therefore it will not create a significant impact on utilities and services.
2.	Will the subproject make significant demands on utilities and services?	X	–	–	–	facilities including sewerage lines and water is available at site



S/No	ISSUES	None	Minor/ Small	Moderate/ Medium	Significant / Large	Remarks
						therefore no additional demand is required.
3.	Will the subproject require significant levels of accommodation or service amenities to support the workforce during construction	X	–	–	–	
C	Water and Soil Contamination					
1.	Will the subproject require large amounts of raw materials or construction materials?	–	X Small amount of construction materials, sands, Iron, fencing, gravel, solar panel, batteries, fiber glass, crush, cement, steel will be	–	–	As mitigation measure contractor will be advised to: <ul style="list-style-type: none"> • use asbestos free cement. • Do debagging in a closed compound.



S/No	ISSUES	None	Minor/ Small	Moderate/ Medium	Significant / Large	Remarks
			used as per requirement.			
2.	Will the subproject generate large amounts of residual wastes, construction material waste or cause soil erosion?	X	–	–	–	
3.	Will the subproject result in potential soil or water contamination (e.g., from oil, grease and fuel from equipment yards)?	X	–	–	–	The sub project includes construction of septic tank and soak pits for wastewater hence all waste will go in these tanks for final disposal.
4.	Will the subproject lead to an increase in suspended sediments in streams affected by road cut erosion, decline in water quality and increased sedimentation downstream?	X	–	–	–	
5.	Will the subproject involve the use of chemicals or solvents?	–	X Paint, drilling, polish etc will be used during installation.	–	–	As a mitigation measure contractor will be advised to: <ul style="list-style-type: none"> • use lead free paint, • make sure that proper PPE be provided to each worker on site, • store the chemicals in enclosed stockroom (if required).



S/No	ISSUES	None	Minor/ Small	Moderate/ Medium	Significant / Large	Remarks
6.	Will the subproject lead to the destruction of vegetation and soil in the right-of-way, borrow pits, waste dumps, and equipment yards?	X	–	–	–	
7.	Will the subproject lead to the creation of stagnant water bodies in borrow pits, quarries, etc., encouraging for mosquito breeding and other disease vectors?	–	X	–	–	Yes, up to a small amount. Regular cleaning of site by contractor, refilling of borrow pits after completion of work will be ensured.
D	Noise and Air Pollution Hazardous Substances					
1.	Will the subproject increase the levels of harmful air emissions?	X	–	–	–	
2.	Will the subproject increase ambient noise levels?	X		–	–	
3.	Will the subproject involve the storage, handling or transport of hazardous substances?	X	–	–	–	
E	Fauna and Flora					
1.	Will the subproject involve the disturbance or modification of existing drainage	X	–	–	–	



S/No	ISSUES	None	Minor/ Small	Moderate/ Medium	Significant / Large	Remarks
	channels (rivers, canals) or surface water bodies (wetlands, marshes)?					
2.	Will the subproject lead to the destruction or damage of terrestrial or aquatic ecosystems or endangered species directly or by induced development?	X	–	–	–	
3.	Will the subproject lead to the disruption/destruction of wildlife through interruption of migratory routes,	X	–	–	–	
4	Disturbance of wildlife habitats, and noise-related problems?	X	–	–	–	
F	Destruction/Disruption of Land and Vegetation					
1.	Will the subproject lead to unplanned use of the infrastructure being developed?	X	–	–	–	
2.	Will the subproject lead to long-term or semi- permanent destruction of soils in cleared areas not suited for agriculture?	X	–	–	–	
3.	Will the subproject lead to the interruption of subsoil and overland drainage patterns (in areas of cuts and fills)?	X	–	–	–	



S/No	ISSUES	None	Minor/ Small	Moderate/ Medium	Significant / Large	Remarks
4.	Will the subproject lead to landslides, slumps, slips and other mass movements in road cuts?	X	–	–	–	
5.	Will the subproject lead to erosion of lands receiving concentrated outflow carried by covered or open drains?	X	–	–	–	
6.	Will the subproject lead to health hazards and interference of plant growth adjacent to roads by dust raised and blown by vehicles?	X	–	–	–	
G	Cultural Property					
1.	Will the subproject have an impact on archaeological or historical sites, including historic urban areas?	X	–	–	–	
2.	Will the subproject have an impact on religious monuments, structures and/or cemeteries?	X	–	–	–	
H	Expropriation and Social Disturbance					
1.	Will the subproject involve land expropriation or demolition of existing structures?	X	–	–	–	



S/No	ISSUES	None	Minor/ Small	Moderate/ Medium	Significant / Large	Remarks
2.	Will the subproject lead to induced settlements by workers and others causing social and economic disruption?	X	–	–	–	
3.	Will the subproject lead to environmental and social disturbance by construction camps?	X	–	–	–	
4.	Will the sub- project require of tree cutting, if yes how many, location, pictures	X	–	–	–	



Environmental and Social Screening (Site Related Issues)

S. No	Issues	Yes	No	Don't Know	Remarks/ Mitigation Measures
1.	Does the subproject require land acquisition? [Note: Fill in the land acquisition form if YES]	–	X	–	This site is govt. property owned by KgDA.
2.	Does the subproject negatively impact livelihoods [Note: Describe separately if YES]	–	X	–	
3.	Is the sub project located on land with contested ownership?	–	X	–	
4.	Is the sub project located in an area with security problems	–	X	–	
5.	Is the sub projected located on land reclaimed from floods (the ownership here may be contested)	–	X	–	
6.	Is the subproject located in an area with designated natural reserves?	–	X	–	
7.	Is the subproject located in an area with unique natural features?	–	X	–	
8.	Is the subproject located in an area with endangered or	–	X	–	



S. No	Issues	Yes	No	Don't Know	Remarks/ Mitigation Measures
	conservation-worthy ecosystems, fauna or flora?				
9.	Is the subproject located in an area which would create a barrier for the movement of conservation-worthy wildlife or livestock?	–	X	–	
10.	Is the subproject located close to groundwater sources, surface water bodies, water courses or wetlands?	–	X	–	
11.	Is the subproject located in an area with designated cultural properties such as archaeological, historical and/or religious sites?	–	X	–	
12.	Is the subproject in an area with religious monuments, structures and/or cemeteries?	–	X	–	
13.	Is the project located in an area from where people have been displaced?	–	X	–	



S. No	Issues	Yes	No	Don't Know	Remarks/ Mitigation Measures
14.	Is the project located in an area where IDPs are temporarily settled?	–	X	–	
15.	Is the project in a politically sensitive area?	–	X	–	
16.	Is the subproject in a polluted or contaminated area?	–	X	–	
17.	Is the subproject located in an area of high visual and landscape quality?	X	–	–	The site surroundings have high visual quality but installation of these washrooms will not affect the same.
18.	Is the subproject located in an area susceptible to landslides or erosion?	-	X	–	
19.	Is the subproject located in an area of seismic faults?	X	–	–	The site is located in Zone 3
20.	Is the subproject located in a densely populated area?	-	X	–	
21.	Is the subproject located on prime agricultural land?	–	X	–	
22.	Is the subproject located in an area of tourist importance?	X	–	–	The proposed location is situated on main Kaghan Naran road and is best suited for tourist facilitation.
23.	Is the subproject located near a waste dump?	–	X	–	



S. No	Issues	Yes	No	Don't Know	Remarks/ Mitigation Measures
24.	Does the subproject have access to potable water?	X	–	–	Government water supply line is available on location and will be used for toilets.
25.	Is the subproject located in an area with a wastewater network?	–	X	–	No however it is explained that wastewater from toilets will be treated in septic tank. KgDA will outsource cleaning and operations of these toilets.
26.	Is the subproject located in the urban plan of the city?	–	X	–	



Environmental and Social Screening (Involuntary Resettlement Screening)

Potential Impacts	Yes	No	Expected	Remarks
Does the sub-project involve any physical construction? work, i.e. rehabilitation, reconstruction or new construction? Specify in "remarks" column.	X	-	-	Small scale activities e.g. septic tank, soakage pit, leveling and dressing is involved.
Does the sub-project involve impacts on land, assets and people, if "Yes" try to quantify the impacts and check following items. If "No" impacts, explain the situation in "remarks" and move to section 2.	-	X	-	
Potential impacts				
Land (quantify and describe types of land in "remarks column".	X	-	-	This activity will be carried out on government land owned by KgDA.
Government or state owned land free of occupation (agriculture or settlement)	X	-	-	This activity will be carried out on government land.
Private land				
➤ Residential	-	X	-	
➤ Commercial	-	X	-	
➤ Agriculture	-	X	-	
➤ Communal	-	X	-	
➤ Others (specify in "remarks").	-	X	-	
Land-based assets:	-	X	-	
➤ Residential structures	-	X	-	
➤ Commercial structures (specify in "remarks")	-	X	-	
➤ Community structures (specify in "remarks")	-	X	-	
➤ Agriculture structures (specify in "remarks")	-	X	-	



Potential Impacts	Yes	No	Expected	Remarks
➤ Public utilities (specify in “remarks”)	-	X	-	
➤ Others (specify in “remarks”)	-	X	-	
Agriculture related impacts	-	X	-	
➤ Crops and vegetables (specify types and cropping area in “remarks”).	-	X	-	
➤ Trees (specify number and types in “remarks”).	-	X	-	
➤ Others (specify in “remarks”).	-	X	-	
Affected Persons (DPs)	-	X	-	
➤ Number of DPs	-	X	-	
➤ Males	-	X	-	
➤ Females	-	X	-	
➤ Titled land owners	-	X	-	
➤ Tenants and sharecroppers	-	X	-	
➤ Leaseholders	-	X	-	
➤ Agriculture wage laborers	-	X	-	
➤ Encroachers and squatters (specify in remarks column).	-	X	-	
➤ Vulnerable DPs (e.g. women headed households, minors and aged, orphans, disabled persons and those below the poverty line). Specify the number and vulnerability in “remarks”.	-	X	-	
➤ Others (specify in “remarks”)	-	X	-	
Section 2	-	X	-	
Others (specify in “remarks”).	-	X	-	



Potential Impacts	Yes	No	Expected	Remarks
➤ Are there any indigenous or other minority groups affected by land acquisition or project activities? If "Yes" check the following items	-	X	-	
➤ Indigenous groups (specify groups in "remarks"). Describe nature of impacts	-	X	-	
➤ Minority groups (specify in "remarks"). Describe nature of impacts	-	X	-	



Summarized E&S Screening Table

Type	Physical					Biological		Social and Socioeconomic											
Activities	Soil Erosion/ Contamination	Air Quality	Surface Water Quality	Groundwater Quality	Water Availability and Consumption	Natural	Wildlife	Blocked Access and Impacts on	Noise	Impacts on	Impacts on	Livestock Grazing	Compensation	Safety Hazard	Infrastructure	Public Health	Aesthetic Value	Cultural Issues	Gender Issues
Construction activities	C	C	B	B	C	C	C	C	C	B	B	C	C	C	B	B	C	C	C

KEY: A for high risk, B for medium risk, and C for negligible risk.



Overall Assessment	
<ul style="list-style-type: none"> Sub-project is declined 	—
<ul style="list-style-type: none"> Sub-project is accepted 	Yes
<ul style="list-style-type: none"> Sub-project is classified as environmental Category A and requires an in- depth Environmental and Social Impact Assessment and an Environmental Management Plan. 	—
<ul style="list-style-type: none"> Sub-project is classified as environmental Category B and requires an Environmental and Social Management Plan. 	—
<ul style="list-style-type: none"> Sub-project is classified as environmental Category C and only requires an Environmental Management Plan (EMP). 	<p>The sub-project impacts are localized and reversible in nature and can be managed through mitigation and management plan (checklist followed by supervision and monitoring checklist). An EMP will also be prepared. This will be implemented by project engineer, contractor, and PMU Environmental and Social Safeguard team.</p>



Annexure- V

**Environmental and Social Screening (E&S Screening)
KITE DoT- Project**

Name of Sub- project	Installation of Pre-Fabricated Toilets Malkandi, Kaghan Valley, District Mansehra
Nature of Subproject	Tourism facilitation
Subproject Location	Malkandi Kaghan Valley District Mansehra
Coordinates	34°52'10.77" N; 73°36'45.93" E
Proposed Activities	PMU KITE DoT intends to install 4 units prefab washrooms near Malkandi Kaghan Valley District Mansehra. These units will include two units for male and a single unit for female and persons with disabilities (PWD). These units will be installed as per drawings attached in this document. The installation activities will include minor civil works i.e. construction of soak pits, septic tank, levelling of site, installation of washrooms and necessary sanitary works.
Subproject Objective	Tourism facilitation
Proposing Agency/ Department	KITE Project DoT
Estimated Cost	Rs.2,200,000/-
Current Information for Environmental & Social Screening	KITE ESMF, site visit, consultation with communities & KgDA
Consultation with communities	A consultation meeting was conducted with local hotels rep, TMA and KgDA. The participants were: i. Mr. Zahid Hussain, DD KgDA ii. Mr. Tufail Khan, Tehsildar Kaghan iii. Mr. Shamsheer Khan, Local Hotel Association Rep



iv. Mr. Zia Ullah, TMA Balakot

The consultation involved briefing about the proposed installation of prefab toilets for tourist facilitation. The local hotel rep and other local welcomed the initiative and suggested the following to be considered during implementation:

- i. Keeping in view the tourist influx separate units for male and female is required.
- ii. These toilets shall also be accessible for people visiting the site.
- iii. Proper cleanliness shall also be ensured during and post implementation.
- iv. Proper monitor should be carried out to ensure cleanliness of the toilets.
- v. The people demanded for hiring of unskilled labors from local populace.

The screening team ensured the above compliances.



Environmental and Social Screening

S/No	ISSUES	None	Minor/ Small	Moderate/ Medium	Significant / Large	Remarks
A	Zoning and Land Use Planning					
1.	Will the subproject affect land use zoning and planning or conflict with prevalent land use patterns?	X	–	–	–	Since this site is along road therefore this activity will not affect any land use pattern.
2.	Will the subproject involve significant land disturbance or site clearance?	X	–	–	–	No site clearance is involved
3.	Will the subproject land be subject to potential encroachment by urban or industrial use or located in an area intended for urban or industrial development?	X	–	–	–	
B	Utilities and Facilities					
1.	Will the subproject require the setting up of ancillary facilities?	X	–	–	–	Since it is small activity therefore it will not create a significant impact on utilities and services.
2.	Will the subproject make significant demands on utilities and services?	X	–	–	–	facilities including sewerage lines and water is available at site therefore no additional demand is required.



S/No	ISSUES	None	Minor/ Small	Moderate/ Medium	Significant / Large	Remarks
3.	Will the subproject require significant levels of accommodation or service amenities to support the workforce during construction	X	–	–	–	
C	Water and Soil Contamination					
1.	Will the subproject require large amounts of raw materials or construction materials?	–	X Small amount of construction materials, sands, Iron, fencing, gravel, solar panel, batteries, fiber glass, crush, cement, steel will be used as per requirement	–	–	As mitigation measure contractor will be advised to: <ul style="list-style-type: none"> • Use asbestos free cement. • Do debagging in a closed compound
2.	Will the subproject generate large amounts of residual wastes, construction	X	–	–	–	



S/No	ISSUES	None	Minor/ Small	Moderate/ Medium	Significant / Large	Remarks
	material waste or cause soil erosion?					
3.	Will the subproject result in potential soil or water contamination (e.g., from oil, grease and fuel from equipment yards)?	X	–	–	–	The sub project includes construction of septic tank and soak pits for wastewater hence all waste will go in these tanks for final disposal.
4.	Will the subproject lead to an increase in suspended sediments in streams affected by road cut erosion, decline in water quality and increased sedimentation downstream?	X	–	–	–	
5.	Will the subproject involve the use of chemicals or solvents?	–	X Paint, drilling, polish etc will be used during installation	–	–	As a mitigation measure contractor will be advised to: <ul style="list-style-type: none"> • use lead free paint, • make sure that proper PPE be provided to each worker on site, • store the chemicals in enclosed stockroom (if required).
6.	Will the subproject lead to the destruction of vegetation and soil in the right-of-way, borrow pits, waste dumps, and equipment yards?	X	–	–	–	



S/No	ISSUES	None	Minor/ Small	Moderate/ Medium	Significant / Large	Remarks
7.	Will the subproject lead to the creation of stagnant water bodies in borrow pits, quarries, etc., encouraging for mosquito breeding and other disease vectors?	–	X	–	–	Yes, up to a small amount. Regular cleaning of site by contractor, refilling of borrow pits after completion of work will be ensured.
D	Noise and Air Pollution Hazardous Substances					
1.	Will the subproject increase the levels of harmful air emissions?	X	–	–	–	
2.	Will the subproject increase ambient noise levels?	X	–	–	–	
3.	Will the subproject involve the storage, handling or transport of hazardous substances?	X	–	–	–	
E	Fauna and Flora					
1.	Will the subproject involve the disturbance or modification of existing drainage channels (rivers, canals) or surface water bodies (wetlands, marshes)?	X	–	–	–	
2.	Will the subproject lead to the destruction or damage of terrestrial or aquatic ecosystems or endangered species directly or by induced development?	X	–	–	–	



S/No	ISSUES	None	Minor/ Small	Moderate/ Medium	Significant / Large	Remarks
3.	Will the subproject lead to the disruption/destruction of wildlife through interruption of migratory routes,	X	–	–	–	
4.	Disturbance of wildlife habitats, and noise-related problems?	X	–	–	–	
F	Destruction/Disruption of Land and Vegetation					
1.	Will the subproject lead to unplanned use of the infrastructure being developed?	X	–	–	–	
2.	Will the subproject lead to long-term or semi- permanent destruction of soils in cleared areas not suited for agriculture?	X	–	–	–	
3.	Will the subproject lead to the interruption of subsoil and overland drainage patterns (in areas of cuts and fills)?	X	–	–	–	
4.	Will the subproject lead to landslides, slumps, slips and other mass movements in road cuts?	X	–	–	–	
5.	Will the subproject lead to erosion of lands receiving concentrated outflow carried by covered or open drains?	X	–	–	–	



S/No	ISSUES	None	Minor/ Small	Moderate/ Medium	Significant / Large	Remarks
6.	Will the subproject lead to health hazards and interference of plant growth adjacent to roads by dust raised and blown by vehicles?	X	–	–	–	
G	Cultural Property					
1.	Will the subproject have an impact on archaeological or historical sites, including historic urban areas?	X	–	–	–	
2.	Will the subproject have an impact on religious monuments, structures and/or cemeteries?	X	–	–	–	
H	Expropriation and Social Disturbance					
1.	Will the subproject involve land expropriation or demolition of existing structures?	X	–	–	–	
2.	Will the subproject lead to induced settlements by workers and others causing social and economic disruption?	X	–	–	–	
3.	Will the subproject lead to environmental and social disturbance by construction camps?	X	–	–	–	



S/No	ISSUES	None	Minor/ Small	Moderate/ Medium	Significant / Large	Remarks
4.	Will the sub- project require of tree cutting, if yes how many, location, pictures	X	–	–	–	



Environmental and Social Screening (Site Related Issues)

S. No	Issues	Yes	No	Don't Know	Remarks/ Mitigation Measures
1.	Does the subproject require land acquisition? [Note: Fill in the land acquisition form if YES]	–	X	–	This site is govt. property owned by KgDA
2.	Does the subproject negatively impact livelihoods [Note: Describe separately if YES]	–	X	–	
3.	Is the sub project located on land with contested ownership?	–	X	–	
4.	Is the sub project located in an area with security problems	–	X	–	
5.	Is the sub projected located on land reclaimed from floods (the ownership here may be contested)	–	X	–	
6.	Is the subproject located in an area with designated natural reserves?	–	X	–	
7.	Is the subproject located in an area with unique natural features?	–	X	–	
8.	Is the subproject located in an area with endangered or	–	X	–	



S. No	Issues	Yes	No	Don't Know	Remarks/ Mitigation Measures
	conservation-worthy ecosystems, fauna or flora?				
9.	Is the subproject located in an area which would create a barrier for the movement of conservation-worthy wildlife or livestock?	–	X	–	
10.	Is the subproject located close to groundwater sources, surface water bodies, water courses or wetlands?	–	X	–	
11.	Is the subproject located in an area with designated cultural properties such as archaeological, historical and/or religious sites?	–	X	–	
12.	Is the subproject in an area with religious monuments, structures and/or cemeteries?	–	X	–	
13.	Is the project located in an area from where people have been displaced?	–	X	–	



S. No	Issues	Yes	No	Don't Know	Remarks/ Mitigation Measures
14.	Is the project located in an area where IDPs are temporarily settled?	–	X	–	
15.	Is the project in a politically sensitive area?	–	X	–	
16.	Is the subproject in a polluted or contaminated area?	–	X	–	
17.	Is the subproject located in an area of high visual and landscape quality?	X	–	–	The site surroundings have high visual quality but installation of these washrooms will not affect the same.
18.	Is the subproject located in an area susceptible to landslides or erosion?	-	X	–	
19.	Is the subproject located in an area of seismic faults?	X	–	–	The site is located in Zone 3
20.	Is the subproject located in a densely populated area?	-	X	–	
21.	Is the subproject located on prime agricultural land?	–	X	–	
22.	Is the subproject located in an area of tourist importance?	X	–	–	The proposed location is situated on main Kaghan-Naran road and is best suited for tourist facilitation
23.	Is the subproject located near a waste dump?	–	X	–	



S. No	Issues	Yes	No	Don't Know	Remarks/ Mitigation Measures
24.	Does the subproject have access to potable water?	X	–	–	Government water supply line is available on location
25.	Is the subproject located in an area with a wastewater network?	–	X	–	No however it is explained that wastewater from toilets will be treated in septic tank. KGDA will outsource cleaning and operations of these toilets.
26.	Is the subproject located in the urban plan of the city?	–	X	–	



Environmental and Social Screening (Involuntary Resettlement Screening)

Potential Impacts	Yes	No	Expected	Remarks
Does the sub-project involve any physical construction work, i.e. rehabilitation, reconstruction or new construction? Specify in "remarks" column.	X	-	-	Small scale activities e.g. septic tank, soakage pit, leveling and dressing is involved.
Does the sub-project involve impacts on land, assets and people, if "Yes" try to quantify the impacts and check following items. If "No" impacts, explain the situation in "remarks" and move to section 2.	-	X	-	
Potential impacts				
Land (quantify and describe types of land in "remarks column".	X	-	-	This activity will be carried out on government land owned by KgDA
Government or state owned land free of occupation (agriculture or settlement)	X	-	-	This activity will be carried out on Government land.
Private land				
➤ Residential	-	X	-	



Potential Impacts	Yes	No	Expected	Remarks
➤ Commercial	-	X	-	
➤ Agriculture	-	X	-	
➤ Communal	-	X	-	
➤ Others (specify in "remarks").	-	X	-	
Land-based assets:	-	X	-	
➤ Residential structures	-	X	-	
➤ Commercial structures (specify in "remarks")	-	X	-	
➤ Community structures (specify in "remarks")	-	X	-	
➤ Agriculture structures (specify in "remarks")	-	X	-	
➤ Public utilities (specify in "remarks")	-	X	-	
➤ Others (specify in "remarks")	-	X	-	
Agriculture related impacts	-	X	-	
➤ Crops and vegetables (specify types and cropping area in "remarks").	-	X	-	
➤ Trees (specify number and types in "remarks").	-	X	-	
➤ Others (specify in "remarks").	-	X	-	
Affected Persons (DPs)	-	X	-	
➤ Number of DPs	-	X	-	
➤ Males	-	X	-	
➤ Females	-	X	-	
➤ Titled land owners	-	X	-	
➤ Tenants and sharecroppers	-	X	-	
➤ Leaseholders	-	X	-	
➤ Agriculture wage laborers	-	X	-	
➤ Encroachers and squatters (specify in remarks)	-	X	-	
➤ Vulnerable DPs (e.g. women headed households, minors)	-	X	-	



Potential Impacts	Yes	No	Expected	Remarks
➤ Others (specify in "remarks")	-	X	-	
Section 2	-	X	-	
Others (specify in "remarks").	-	X	-	
➤ Are there any indigenous or other minority groups	-	X	-	
➤ Indigenous groups (specify groups in "remarks").	-	X	-	
➤ Minority groups (specify in "remarks"). Describe nature of	-	X	-	



Summarized E&S Screening Table

Type of Grant (s) Activities	Physical					Biological		Social and Socioeconomic											
	Soil Erosion/ Contamination	Air Quality	Surface Water Quality	Groundwater	Water Availability and Consumption	Natural Resources	Wildlife	Blocked Access	Noise and Vibration	Impacts on Cultural Heritage	Impacts on Livestock Grazing	Compensation	Safety Hazard	Infrastructure	Public Health	Aesthetic Value	Cultural Issues	Gender Issues	
Construction activities	C	C	B	B	C	C	C	C	C	B	B	C	C	C	B	B	C	C	C

KEY: A for high risk, B for medium risk, and C for negligible risk.



Overall Assessment	
<ul style="list-style-type: none">• Sub-project is declined	—
<ul style="list-style-type: none">• Sub-project is accepted	Yes
<ul style="list-style-type: none">• Sub-project is classified as environmental Category A and requires an in- depth Environmental and Social Impact Assessment and an Environmental Management Plan.	—
<ul style="list-style-type: none">• Sub-project is classified as environmental Category B and requires an Environmental Management Plan.	—
<ul style="list-style-type: none">• Sub-project is classified as environmental Category C and only requires an Environmental Management Plan (EMP).	The sub-project impacts are localized and reversible in nature and can be managed through mitigation and management plan (checklist followed by supervision and monitoring checklist). An EMP will also be prepared. This will be implemented by project engineer, contractor, and PMU Environmental and Social Safeguard team.



ANNEX-VI : Chance Find Procedures

Chance find procedures will be used as follows:

- a. Stop the construction activities in the area of the chance find.
- b. Delineate the discovered site or area.
- c. Secure the site to prevent any damage or loss of removable objects. In cases of removable antiquities or sensitive remains, a night guard shall be present until the responsible local authorities take over.
- d. Directorate of Archeology and Museum shall be responsible for significant movable and immovable cultural property that pertains to history.
- e. Notify the supervisory Engineer of KITE PMU who in turn will notify the responsible local authorities/or Directorate of Archeology and Museum.
- f. Ensure that decisions on how to handle the finding be taken by the responsible authorities/ Directorate of Archeology and Museum KP.
- g. The management of the finding shall be communicated in writing to Directorate of archeology and museum.
- h. Construction work will resume only after authorization is given by Directorate of Archeology and Museum KP
- i. Site Engineer shall monitor the above regulations relating to the treatment of any chance find encountered are observed. Relevant findings will be recorded Monitoring and Report to the World Bank



Annexure- VII

COVID-19 SOPs

KITE PMU DoT COVID-19 SOPs for Contractors during Construction (COVID-19 Pandemic and Health Safety Measures)

General Introduction: Given the unprecedented nature of the COVID-19 pandemic, contractors are required to take all necessary precautions to maintain the health and safety of workers and nearby communities of the project site and to ensure suitable arrangements regarding hygiene requirements are in place.

The risk of exposure to COVID-19 at the construction site depends on the likelihood of coming within 1 meter of others, in having frequent physical contact with people who may be infected with COVID-19, and through contact with contaminated surfaces and objects.

The Contractor, with support from a relevant medical professional or Occupational Health & Safety (OHS) Advisor, should carry out rapid risk assessments to determine the possibility of exposure risk in order to put in place preventive measures. This should be done for each specific work setting and each job.

Employers and managers, in consultation with workers, should carry out and regularly update the risk assessment for work-related exposure to COVID-19, preferably with the support of occupational health services.

Any suspension or downscaling or resumption of activities should rely on the risk assessment, the capacity to put in place protective measures and the level of compliance, and recommendations of national authorities.

Measures to prevent transmission of COVID-19 that apply to all workplaces and all people at the workplace include frequent hand-washing or disinfection with alcohol-based hand sanitizer, respiratory hygiene such as covering coughs, physical distancing of at least 1 meter or more according to the national recommendations, wearing of masks where distancing is not possible, regular environmental cleaning and disinfection, and limiting unnecessary travel. Clear policies and messages, training, and



education for staff and managers to increase awareness of COVID-19 are essential. The management of people with COVID-19 or their contacts is also critical e.g. requiring workers who are unwell or who develop symptoms to stay at home, self-isolate and contact a medical professional or the local COVID-19 information line for advice on testing and referral.

Employers, workers, and their organizations should collaborate with health authorities to prevent and control COVID-19. Cooperation between management and workers and their representatives is essential for workplace-related prevention measures. International labour standards on the rights and responsibilities of workers and employers in occupational safety and health should be fully respected.

Contractors, in consultation with workers and their representatives, should plan and implement measures to prevent and mitigate COVID-19 at the workplace through administrative controls, and provide personal protective equipment and clothing according to the risk assessment. Such measures should not involve any expenditure on the part of the workers.

Special measures are needed to protect workers at higher risk of developing severe disease, such as those age 60 and over, or with underlying medical conditions, upon recommendation of the occupational health services. Workers in the informal economy and digital labour platforms, those in small enterprises, domestic and migrant workers should not be left behind in the protection of their health and safety at work place.

There should be no social stigma or discrimination at the workplace for any reason, including access to information and protection from COVID-19, occupational health services and mental health and psychosocial support.

If COVID-19 is contracted through occupational exposure, it could be considered an occupational disease and, if so determined, should be reported and compensated according to the international labour standards and the national schemes for employment injury benefits.

There should be fresh, clean air in all workplaces. For jobs and work tasks at medium or high risk of exposure, WHO recommends an increased ventilation rate through natural aeration or artificial ventilation, preferably without re-circulation of the air. In case of air recirculation, filters should be cleaned regularly.



COVID-19 is associated with a range of concerns, such as fear of falling ill and dying, of being socially excluded, placed in quarantine, or losing a livelihood. Symptoms of anxiety and depression are common reactions for people in the context of COVID-19. Mental health and psychosocial support should be made available to all workers. Comprehensive risk assessments can help identify and mitigate related occupational hazards for mental health

Following are the measures that should be implemented at the entire construction sites by the Contractor to avoid the spread of Covid-19:

Activities	Adaptive Measures
Pre- Execution Phase	
A. Profile preparation	<ul style="list-style-type: none"> ➤ Detail profile of project workforce ➤ Enlist the names, addresses and contact # ➤ Breakdown of the workforce (workers from local community and those who have on site accommodation) ➤ Assigning the task against each person ➤ Schedule the key activities and their duration at site ➤ Identifying all workers who are initially at more risk of contracting Covid-19.
	<ul style="list-style-type: none"> ➤
B. Initial Screening C. Identification of Local Medical Services	<ul style="list-style-type: none"> ➤ All enlisted workforce should go through initial screening process ➤ Record keeping against initial screening ➤ Identifying all workers who are initially at more risk of contracting Covid-19. <p>An emergency desk will be established at the construction site. A focal point will be designated by contractor for this purpose. The KITE PMU DOTD will facilitate. The responsibility of the focal point will to highlight the nearby health services units, and also collect data for the nearby</p>



	<p>tertiary hospitals. For this purpose, the contractor will develop a referral mechanism, if the patient needs tertiary hospital medication, an ambulance will be in place, so as the patient shall move to the required destination on urgent basis for treatment.</p>
During Execution Phase	
A. Preliminary Screening	<p>Regular Screening:</p> <p>Regular screening by using Thermo gun on daily basis before starting civil work at site</p> <p>Checking and recording temperatures of all workers entering the site or requiring self-reporting prior to or on entering the site.</p> <p>If a worker has symptoms of COVID-19 (e.g. fever, dry cough, fatigue) the worker should be removed immediately from work activities and isolated on designated site.</p> <p>Co-workers (i.e. workers with whom the sick worker was in close contact) should be required to stop work, and to quarantine themselves for 14 days, even if they have no symptoms.</p> <p>Sequential Screening:</p> <p>Concerned DHQ medical staff is requested for screening at regular intervals. List should also be</p>



	<p>shared with DHQ for avoiding future inconvenience or hire health safety officer on weekly basis.</p>
<p>B. Special Arrangements regarding PPEs</p>	<p>Ensuring availability of hand washing facilities (sanitizers/soaps) at site</p> <p>Presence of closed waste bins at key places throughout site, including at entrances/exits to work areas (toilet, canteen or food distribution, or provision of drinking water; in worker accommodation; at waste stations; at stores; and in common spaces).</p> <p>Special arrangements regarding PPEs and sanitation at site</p> <p>Record keeping of stock availability on daily basis</p>
<p>C. Restricted Movement/ Demobilization of staff</p>	<p>Encourage employees/ workers/ labor to wash their hands at least for 20 seconds with soap and stay at least one meter away from people who are coughing or sneezing</p> <p>Breakdown of workers who reside at home (i.e. workers from the community), workers who lodge within the local community and workers in on-site accommodation. Workers accommodated on site should be required to minimize contact with people near the site, and in certain cases be prohibited from</p>



	<p>leaving the site for the duration of their contract, so that contact with local communities is avoided.</p> <p>Workers from local communities, who return home daily, weekly or monthly, will be more difficult to manage. They should be subject to health checks at entry to the site (as set out above) and at some point, circumstances may make it necessary to require them to either use accommodation on site or not to come to work.</p> <p>All workers should be provided separate accommodation.</p>
	<p>Limit the number of workers in small workspace areas such as job site elevators, trailers and vehicles, and spaces under construction if possible.</p> <p>Limit close contact with others by maintaining a distance of at least 6 feet, when possible.</p> <p>If a worker is found to have symptoms of COVID-19, the worker should be removed immediately from work activities and isolated on designated site.</p>
<p>D. Training sessions</p>	<p>Health and safety training for Contractor's Personnel</p> <p>(which include project workers and all personnel that the Contractor uses on site, including staff and other employees of the Contractor and Subcontractors and any other personnel assisting the Contractor in</p>



	<p>carrying out project activities.</p> <p>Sessions related to safety procedures, use of construction PPEs, occupational health and safety issues, and code of conduct specially privacy issues including social distancing.</p> <p>Arranging daily briefings with workforce, reminding workers to self-monitor for possible symptoms (fever, cough) and to report to their supervisor or the COVID-19 focal point if they have symptoms or are feeling unwell.</p> <p>Placing posters and sign boards around the site in local languages.</p> <p>Appointing one person on daily basis among the workforce who will serve as trainer for conducting awareness session and encouraging the rest to take preventive measures.</p>
<p><u>E. Operationalization of Grievance Redress Mechanism</u></p>	<p>Effective implementation of GRM at site</p> <p>Ensuring reporting of COVID-19 related cases to project GRM.</p> <p>In case of unavailability of the PPEs at site, grievance would be lodged directly at Project GRM.</p>



	<p>The KITE PMU DOTD has developed Grievance Redressed Mechanism (GRM) for local communities which will also be addressed in the ESMP. The community will make a complaint to the PMU KITE DOTD, the telephone number of PMU KITE DOTD, address and methods of complaints (manually) by the community will be displayed on the notice Board of the contractor at the construction site.</p>
F. Role of KITE PMU DOT.	<p>KITE DOT PMU is required to arrange regular meetings with Contractors and workforce to monitor all procedural implementation of COVID-19 prevention related mechanism.</p> <p>Arrange meeting with concerned DHQs for immediate support and guidance in case of emergency.</p> <p>Conduct regular monitoring visits and assess site compliance against a COVID-19 Screening Checklist.</p>
Post Execution Phase	
A. Post Screening	<p>Screening should be done at the end of the day on daily basis, if a worker is found to have any symptoms of COVID-19, he should be immediately removed from work activities, quarantined at designated site and reported to concerned health department.</p>
B. Cleaning and waste disposal	<p>All waste (PPEs and sanitation related waste) shall be disposed off properly at designated sites.</p>
A. Record Keeping by Contractor	<p>A register shall be maintained by contractor to keep record of attendance and their health status on regular basis.</p>
B. Checking by KITE PMU DOT	<p>KITE PMU DOT will appoint a focal point for each site, who will check the register, and performance of</p>

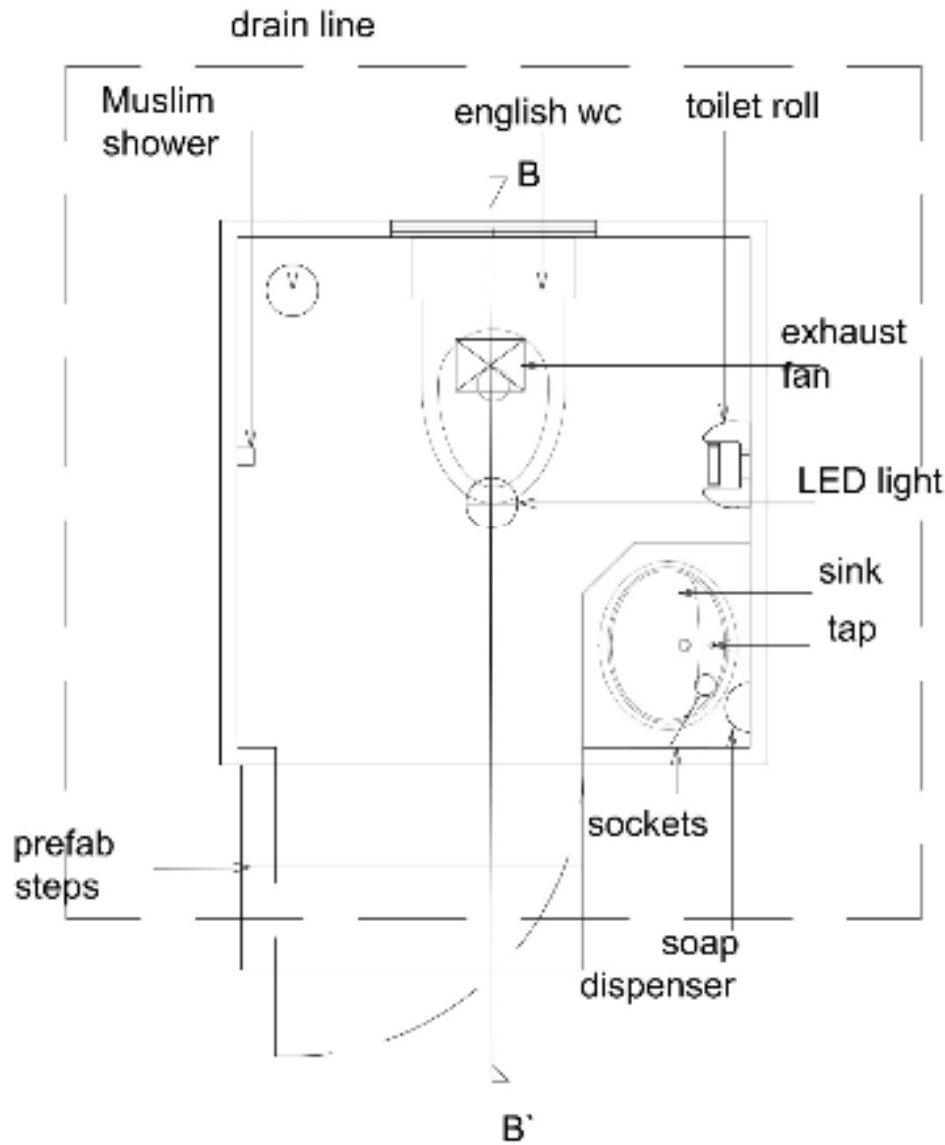


	<p>the implementation of this checklist and report promptly in case of identification of a COVID-19 infected worker. Occupational health and safety advisor will be ensured by contractor, and checked by KITE PMU DOT.</p>
--	---



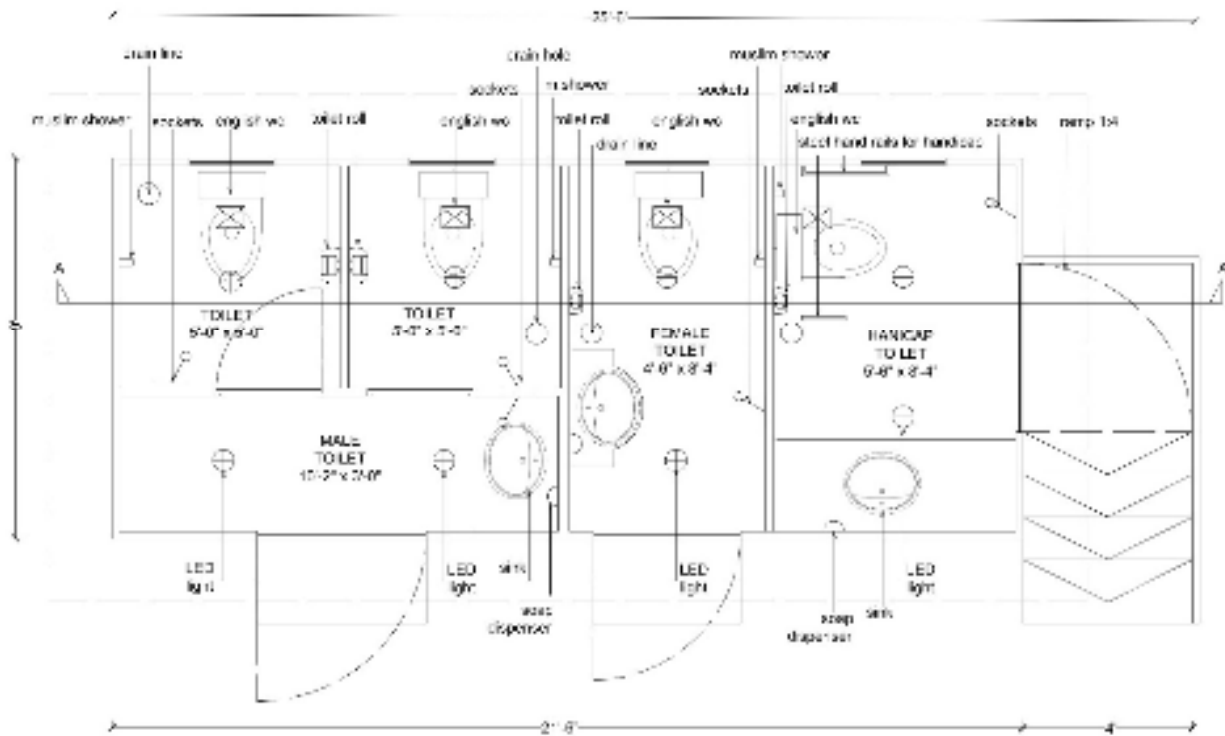
Annexure -VIII Architectural Plans & Drawings:

PLAN



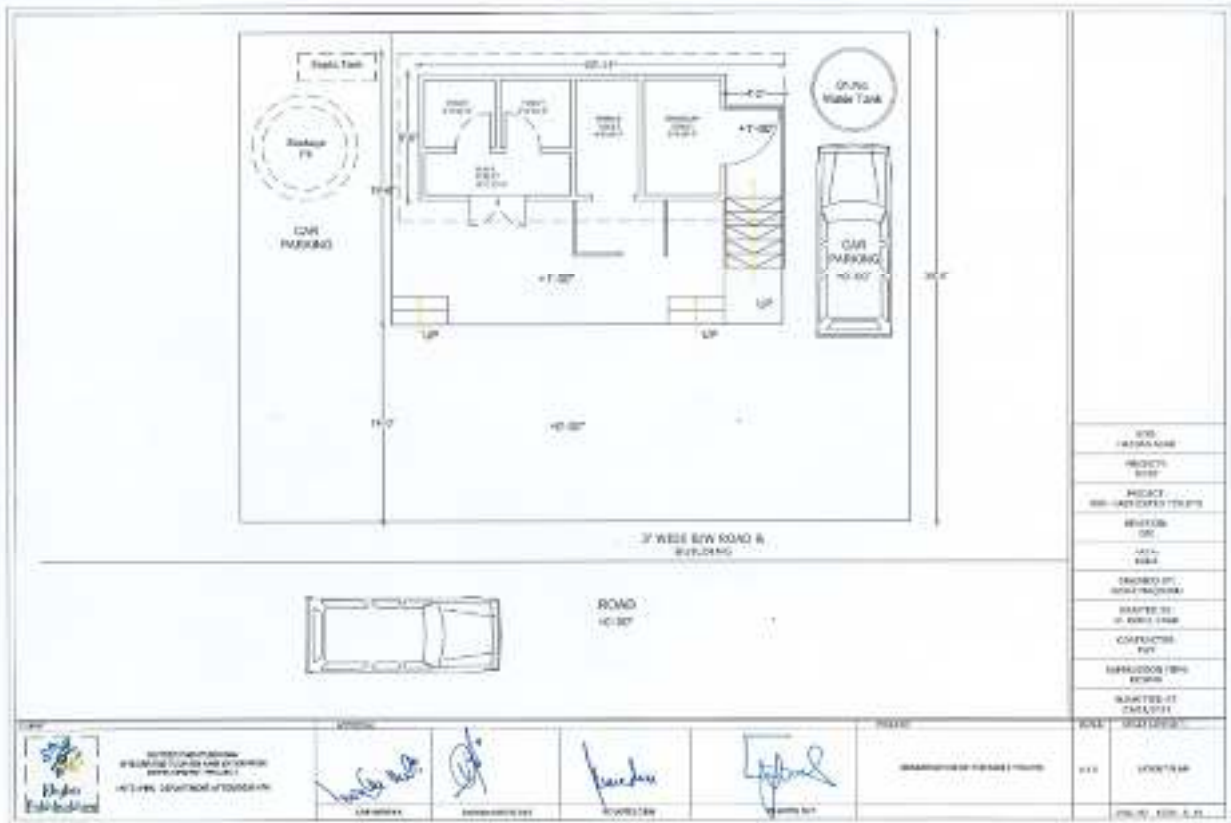


PLAN
4 TOILET 1 UNIT





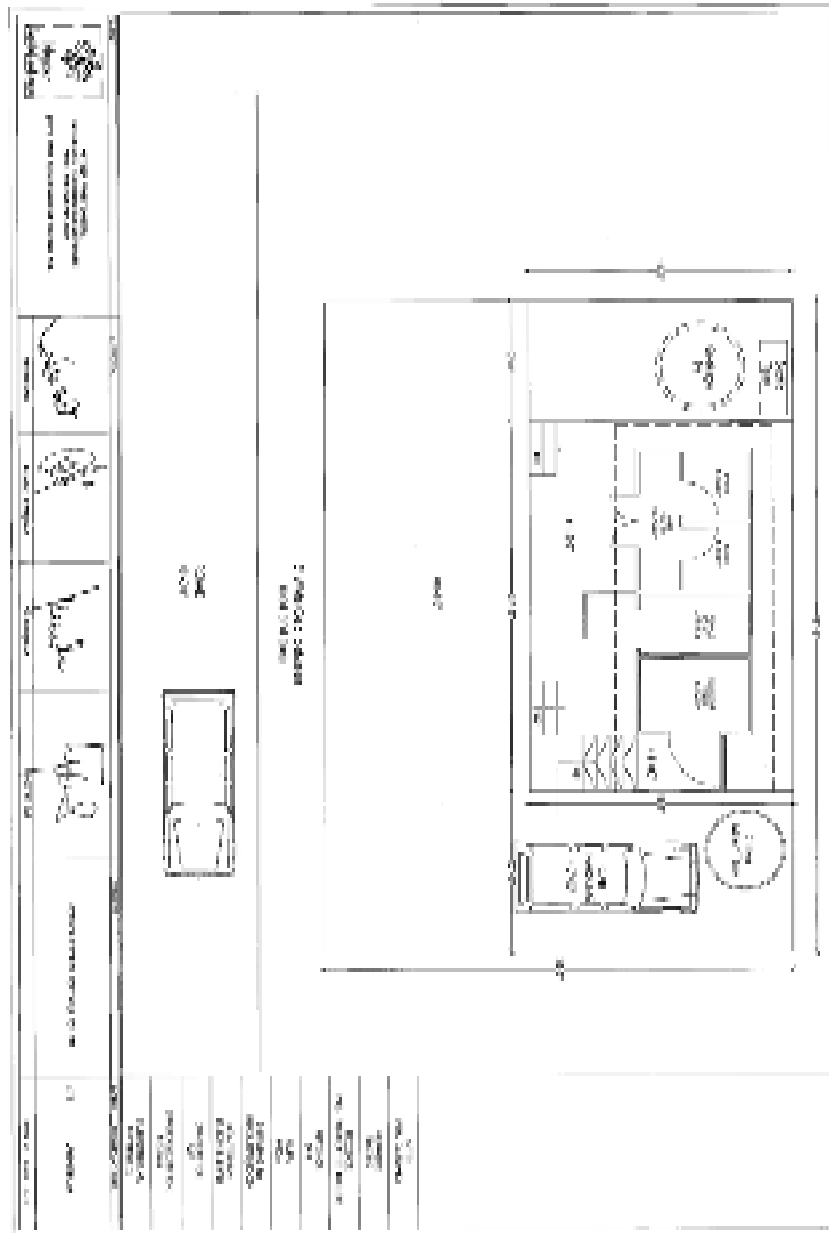
Hassam Abad:







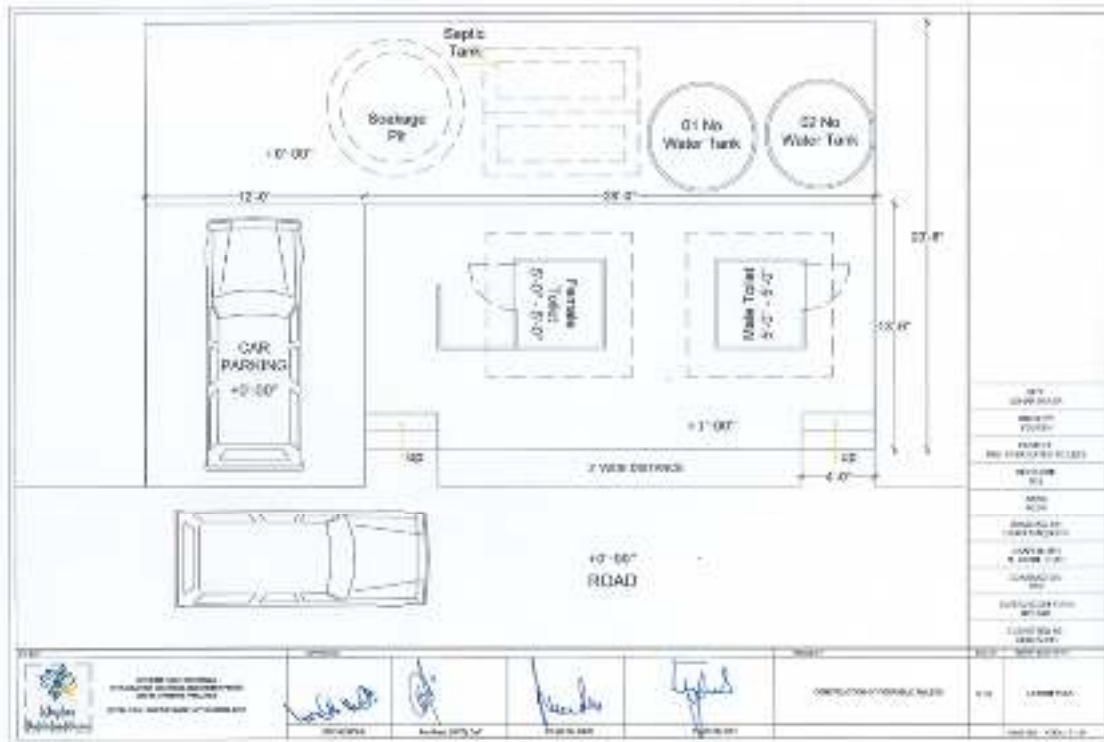
Jammu Da Naka:





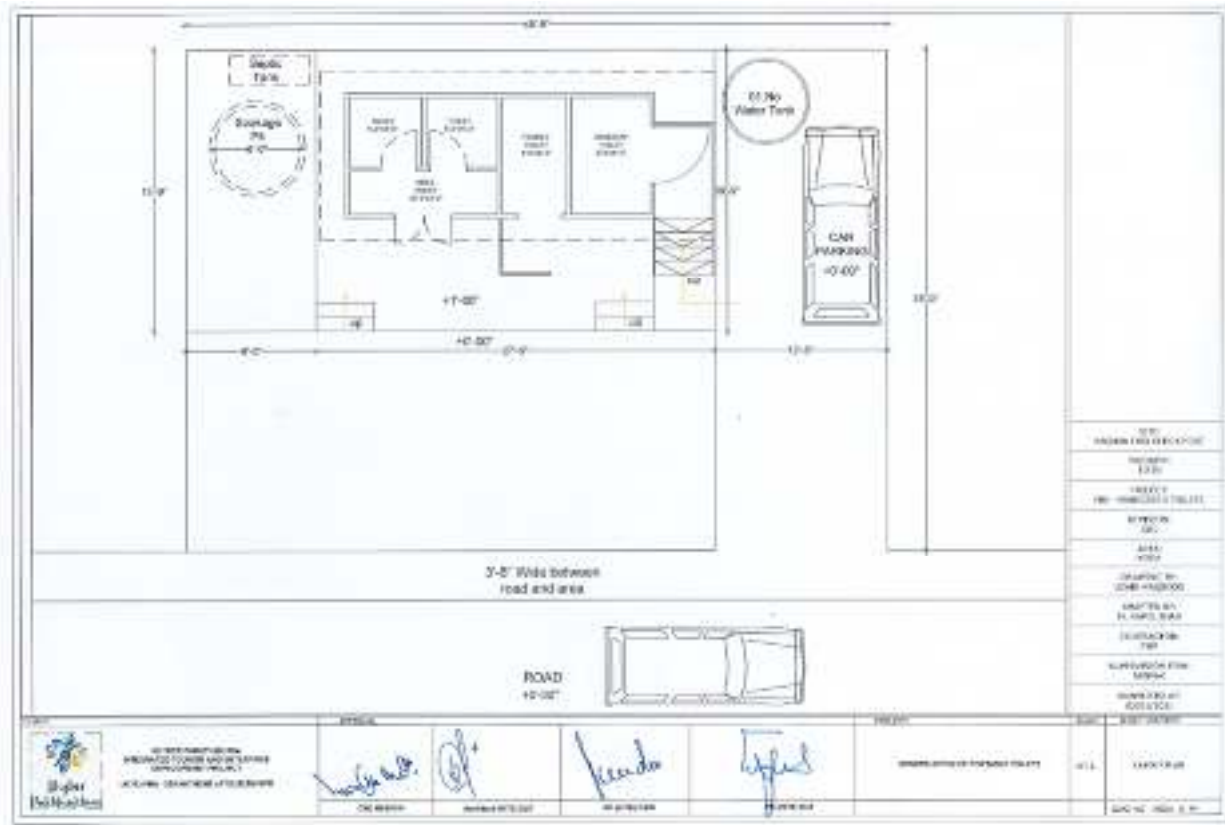


Lohar Banda:



FWO Check Post:









Malkandi:







Annexure -IX NOC from KgDA:



**KAGHAN DEVELOPMENT AUTHORITY (KDA)
GHAZIKOT TOWNSHIP MANSEHRA**

No. 8593-85/KDA
Ph. No. 0997-302115

Dated: 15/06/2024
Mail: pdh@kda@gmail.com

To

The Project Director (KITE),
Sports, Tourism, Culture, Archaeology & Youth Affairs
Department, Khyber Pakhtunkhwa,
Peshawar

Subject: INSTALLATION OF PUBLIC TOILETS

I am directed to refer to the cited above subject and to state that a total of 11 sites were finalized for the installation of pre-fabricated toilets as follows:

S.No	Sites
1	Hassam Abud
2	Jammu Da Naka
3	Malkandi
4	Lohar Bando
5	FWU Check Post
6	Rajwal
7	Chitta Katha
8	Soach
9	Jalkhad
10	Ladu Sar Lake
11	Gittidas

It is further stated that all the sites are clear for execution of the schemes. Foregoing in view, you are requested to direct the contractor for execution of work and early completion of the project please.


**SUPERINTENDET (ADMIN)
KAGHAN DEVELOPMENT AUTHORITY
MANSEHRA**

Copy to:-

1. The Director General, Kaghan Development Authority, Mansehra
2. The Assistant Director, (Planning), Kaghan Development Authority, Mansehra.


**SUPERINTENDET (ADMIN)
KAGHAN DEVELOPMENT AUTHORITY
MANSEHRA**